



Kawasaki ZX 9 R (2002, 2003)

Racing / Evolution Exhaust System

Akrapovic Racing / Evolution Exhaust System

for the Kawasaki ZX 9 R (2002, 2003)

The ZX 9R's styling is as elegant as we have come to expect from Kawasaki. The front end is especially interesting, with its distinctive air dam reminiscent of an American F-16 Falcon fighter jet. As it is a Supersport motorcycle, its performance ranks it as one of the toughest of street fighters. On this bike you can find the ideal line on the street, and put a lot of twists into the straightaways.

GOAL

The characteristics of Kawasakis are well-known, so its always a challenge for us to develop exhaust systems for these bikes, which come already pretty well-polished. The Kawasaki ZX series are perpetual stars in the Akrapovic development charts, and we have always produced top-quality components for the 9R. This year's model is no exception; Akrapovic RACING and EVOLUTION complete exhaust systems, our top lines, are available for the 2003 ZX 9R.

ABOUT AKRAPOVIC RACING & EVOLUTION SYSTEMS

Kawasaki owners are used to the excellent characteristics of their bikes. With the addition of an Akrapovic exhaust system, the performance of your bike will become impossible to resist. Akrapovic RACING and EVOLUTION line exhaust systems guarantee extreme performance. The increase in power and torque is phenomenal, as is customary with Akrapovic exhaust systems. And the increase in power at high rpms is the answer to any rider's dreams: fast energetic riding near the physical limit. The benefits of our exhaust systems will not disappoint you.

With the purchase of a RACING or EVOLUTION exhaust system you will get a product which has received the same attention as world factory teams, as the system was developed by the same group of experts using the same development criteria and potentials. Both systems were developed on stock set-up bikes (frame and power train) and require no additional modification. They are identical in construction, differing only in material, which is reflected in the overall weight of the system. Weight savings are over 50%, even more in the case of the EVOLUTION system with the use of titanium. Both systems are available with a fitting on the link pipe for installation of a lambda sensor. Occasionally we are able to improve the performance of certain systems with the use of interference crossover tubes between the headers, but prototype testing indicated that they were not necessary for these systems.

The tubes in both systems are constructed from conical elements which are welded together with aesthetic perfection. Unfortunately these will be visible only during installation, when you will have to remove the lower engine cowling from your Kawasaki. The 4-2-1 configuration is set up with floating connections held together with high-quality silicon-shielded springs. The muffler for both systems

Technical specifications of Akrapovic exhaust systems and related products subject to change without notice.

is the familiar Akrapovic oval, while the outer sleeve is available in either carbon-fiber or the elegant sheen of titanium. The only difference is the material; the other characteristics of the muffler (tone, performance) remain unchanged.

NOTE:

The muffler is attached to the stock chassis hanging bracket by a carbon-fiber clamp. In order to insure greater compactness in hanging the system, we offer a lighter carbon-fiber chassis hanging bracket as an option, together with an appropriately dimensioned spacer.

Measured performance of Akrapovic RACING and EVOLUTION systems on the Kawasaki ZX 9R:

• power:

a glance at the power curve gives a clear idea of the intentions with which Akrapovic racing exhaust systems are developed. The linear increase of power in comparison with the stock curve is already strongly apparent from 6000 rpm onward, and a major increase is visible at the end of the rpm range from 10000 to 14000 rpm. Stock power begins to fade at about 10600 rpm, while the Akrapovic exhaust system increases and extends the power band. Maximum increased power is achieved at 12000 rpm, where it reaches an amazing 13 HP.

• torque:

with the use of an Akrapovic RACING or EVOLUTION exhaust system, you will see that your ZX 9R can produce a lot more than the stock torque. Of course this is to be expected from our exhaust systems. The torque increase is incredible, and despite the racing character of the Kawasaki, recreational riders will also enjoy dynamic riding without having to change gears as often.

Despite the presence of the lower engine cowling, the Akrapovic logo with the world-famous scorpion will be clearly visible for all the fans to see. You can win them over with the exceptionally penetrating sound of our exhaust systems, and if that's not enough, you can show them the performance which you gained by installing an Akrapovic exhaust system.

	stock	AKRAPOVIC		difference	
weight comparison	11 kg	S.S.	titanium	stock - S.S.	stock - titanium
		5.40 kg	4.50 kg	5.60 kg	6.50 kg
max. rear wheel power	130 HP / 10500 RPM	139.5 HP / 11400 RPM		13 HP / 12000 RPM*	
noise measurement	93 db / 5500 RPM	100.5 db / 5500 RPM		7.5 db / 5500 RPM	
periodic service possibilities without taking off A.E.S.	oil		oil filter		
	YES		NO		
legal for street use	NO				

*MAXIMUM MEASURED POWER DIFFERENCE

Road Program



Akrapovic Exhaust System Technology copyright 2003, all rights reserved

Akrapovic Racing / Evolution Exhaust System

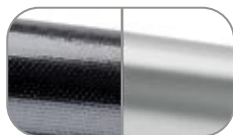
for the Kawasaki ZX 9 R (2002, 2003)

is reserved

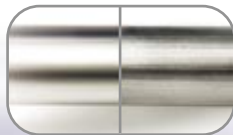


PHOTO:
AKRAPOVIC RACING LINE

Road
Program



The outer sleeve is available in carbon-fiber or titanium



The header tubes are made of stainless steel (Racing Line) or titanium (Evolution Line)



CARBON-FIBER CHASSIS HANGING BRACKET IS OPTIONAL



ANTI-SEIZING GREASE (EVOLUTION LINE ONLY)



CARBON-FIBER MUFFLER CLAMP

Product code: S-K9R1-C, S-K9R1-T, S-K9RFT1TL-C, S-K9RFT1TL-T



Akrapovic Racing / Evolution Exhaust System for the Kawasaki ZX 9 R (2002, 2003)



Akrapovic Exhaust System Technology copyright 2003, all rights reserved

Road Program

Akrapovic Racing / Evolution Exhaust System for the Kawasaki ZX 9 R (2002, 2003)



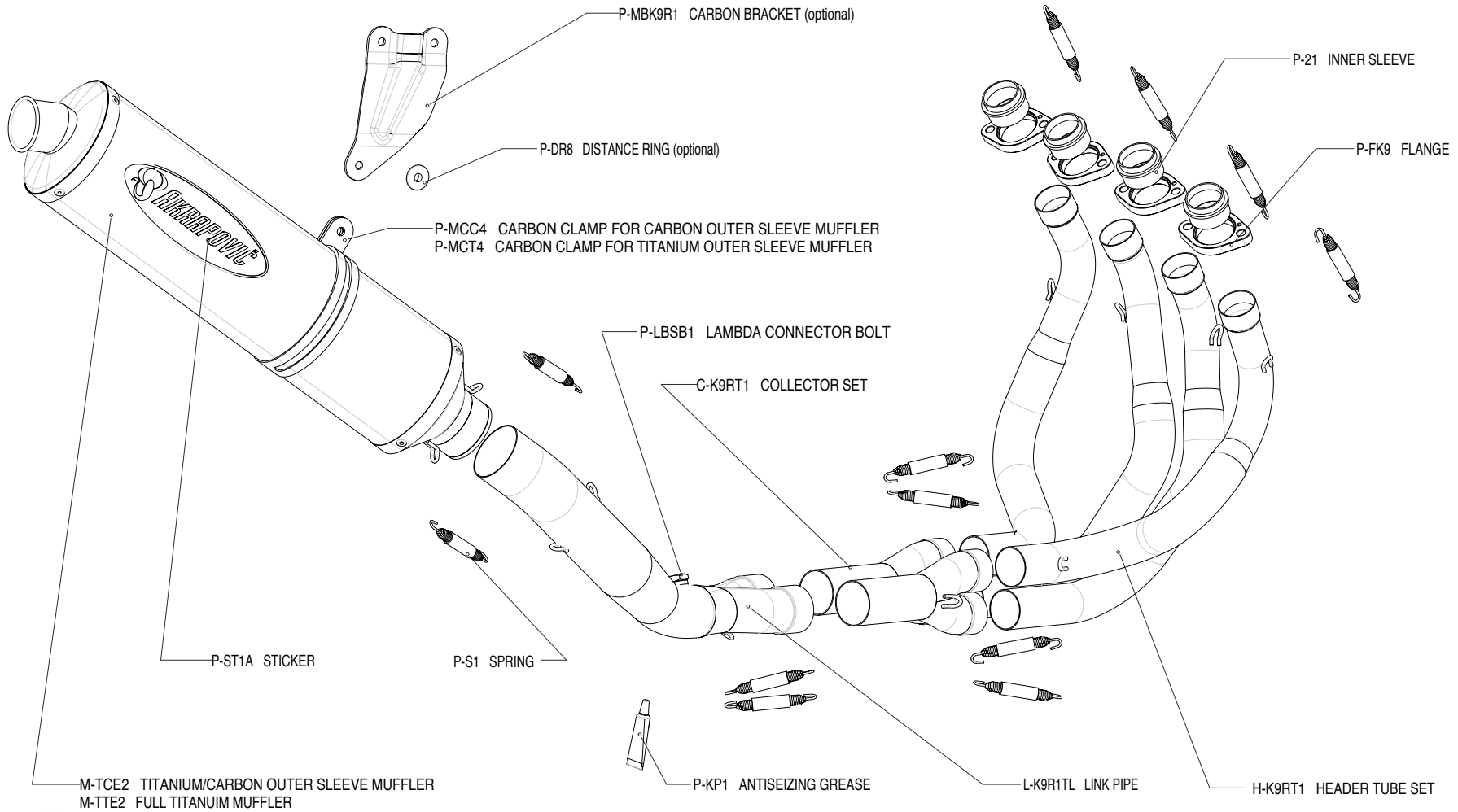
Akrapovic Exhaust System Technology copyright 2003, all rights reserved

Road Program

Akrapovic Evolution Exhaust system

for the Kawasaki ZX 9 R (2002, 2003)

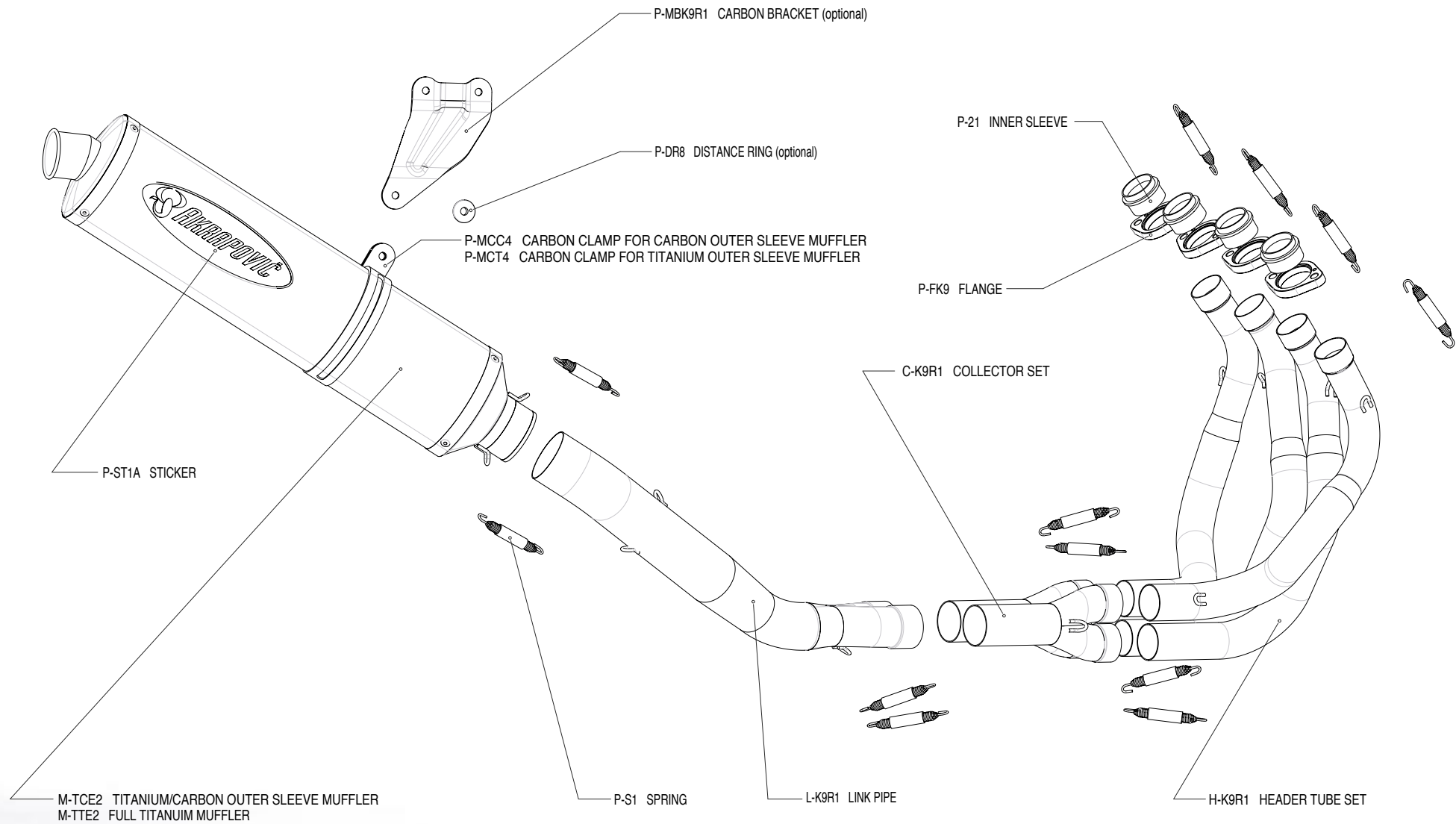
Akrapovic Exhaust System Technology copyright 2003, all rights reserved



Road Program

Akrapovic Racing Exhaust system

for the Kawasaki ZX 9 R (2002, 2003)

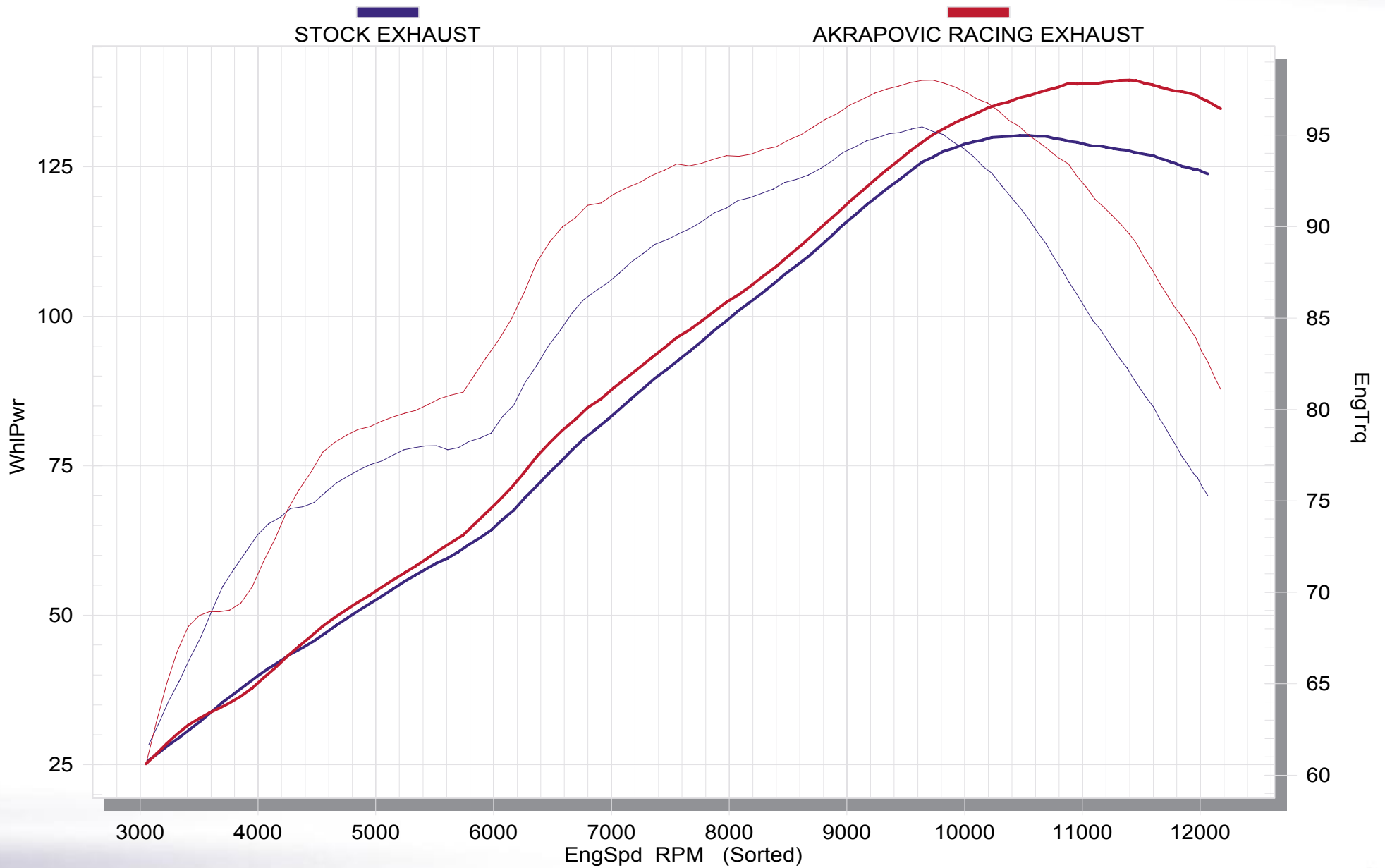


Akrapovic Exhaust System Technology copyright 2003, all rights reserved

Road Program

Akrapovic Racing / Evolution Exhaust System

for the Kawasaki ZX 9 R (2002, 2003)



Akrapovic Exhaust System Technology copyright 2003, all rights reserved

Road Program

