



**AKRAPOVIC EVOLUTION EXHAUST SYSTEM**  
**for the**  
**BMW HP2 (2005 - 2007)**

**Congratulations on purchasing an Akrapovic exhaust system. Please read these installation instructions carefully. If you have any trouble installing the system please contact your authorized dealer!**

**IMPORTANT INFORMATION**

**Exclusion of Certain Liability**

1. The manufacturer, importer or dealer shall not be liable for any incidental damage including personal injury or any other damages caused by improper installation or operation of the Akrapovic exhaust system. When installing the Akrapovic exhaust system be careful that the exhaust system does not touch other parts sensitive to high temperature.
2. Akrapovic makes no representation or warranties with regard to damage caused by the improper installation, use and maintenance of the Akrapovic exhaust system. The warranty is limited to defects recognized by our technical department and to normal use, and excludes items subject to normal wear (gaskets and damping wool). The guarantee is void in case of accident, modification, improper or competition use.
3. Do not attempt to install the Akrapovic exhaust system on a motorcycle for which it was not made or tested by Akrapovic.
4. When the exhaust system gets very hot during operation, be careful not to burn yourself on the exhaust system or parts which are in direct contact with it, even when the motor is not running. Also protect other people, especially children, from the injuries mentioned above.
5. In some cases Akrapovic exhaust system kits contain chemical products (ceramic anti-seizing grease; bolt sealant). Handle with care, do not inhale or swallow. Avoid excessive contact with skin, eyes or mucous membranes. Keep out of reach of children.
6. Technical specifications of Akrapovic exhaust systems and related products subject to change without notice.

**Trademarks**

The Akrapovic Exhaust System Technology logo is a registered trademark of Akrapovic d.å.

**Akrpovic website**

Information about Akrapovic exhaust systems and related products is available on the Akrapovic website at:  
**<http://www.akrapovic-exhaust.com/>**

**Copyright**

No part of the Akrapovic exhaust system or its documentation may be reproduced or distributed in any form or by any means without the prior written authorization of the Akrapovic company.






© Akrapovic d.å. All rights reserved.


**Symbols**

The following symbols are used throughout these installation instructions:



## INSTALLATION INSTRUCTIONS

-  BEFORE INSTALLING CHECK SCHEMATIC OF THE EXHAUST SYSTEM!
-  IF ANY ITEMS IN THE AKRAPOVIC EXHAUST SYSTEM PACKAGE ARE MISSING PLEASE CONTACT YOUR AUTHORIZED DEALER. KEEP THE SCHEMATIC FOR FUTURE REFERENCE.
-  THESE INSTALLATION INSTRUCTIONS MUST BE READ CAREFULLY IN ORDER TO ENSURE PROPER INSTALLATION AND OPERATION OF THE AKRAPOVIC EXHAUST SYSTEM.
-  THE EXHAUST SYSTEM CAN BE EXTREMELY HOT. ALLOW THE MOTORCYCLE TO COOL DOWN BEFORE BEGINNING INSTALLATION.
-  WE ADVISE YOU TO LEAVE INSTALLATION TO A QUALIFIED SERVICEMAN. IMPROPER INSTALLATION MAY RESULT IN A SHORTER LIFETIME OF THE EXHAUST SYSTEM AND/OR DAMAGE TO THE MOTORCYCLE.

	Torx wrench T45
	Torx wrench T30
	T-handle 13mm wrench
	T-handle 12mm wrench
	Combination wrench 22mm
	T-handle 4mm three hexagon key wrench
	FTX Torx 8
	FTX Torx 10
Spring puller	

### REMOVAL OF STOCK EXHAUST SYSTEM

1. Put the motorcycle on a side stand, we recommend a racing stand.
2. Undo the springs at the muffler/ link pipe - collector joint (**Figure 1**).



Figure 1

3. Unscrew the bolt from the muffler metal clamp and remove the muffler (**Figure 2, 3**).



Figure 2



Figure 3

4. loosen the metal clamp at the header tubes – collector joint (**Figure 4**).



*Figure 4*

5. Correctly and carefully disconnect connectors and unscrew the lambda sensors from the header tubes (**Figure 5, 6, 7, 8**).



*Figure 5*



*Figure 6*



*Figure 7*



*Figure 8*

6. Remove the belly shield (Figure 9, 10).



Figure 9



Figure 10

7. Unscrew the header tube flanges and remove the header tubes (Figure 11, 12).



Figure 11



Figure 12

### **INSTALLATION OF THE AKRAPOVIC EVOLUTION EXHAUST SYSTEM**

installing the header tubes:

1. Set up the sleeves together with the flanges and springs; make sure they are correctly oriented (Figure 13, 14, 15), and that the holes for attaching the springs line up with the loops on the header tubes; tighten the flanges (Figure 16).



Figure 13



Figure 14



**Figure 15**



**Figure 16**

2. Insert the header tubes properly and attach the springs (Figure 17, 18).



**Figure 17**



**Figure 18**

3. Make sure the header tubes are not touching other parts of the engine.
4. Reattach the lambda sensors into the header tubes and carefully reconnect the connector (Figure 19, 20).



**Figure 19**



**Figure 20**

**installing the collector with link pipe:**

1. Correctly position and install Akrapovic carbon-fiber heat shield onto Akrapovic collector - link pipe (**Figure 21, 22, 23, 24**).



**Figure 21**



**Figure 22**



**Figure 23**



**Figure 24**

2. Correctly position and slide the Akrapovic Y collector – link pipe onto the header tubes ; bear in mind the hanging bracket of the collector (**Figure 25**).



**Figure 25**

3. Attach the springs. Make sure the collector – link pipe is not touching the frame and other parts. **(Figure 26).**



**Figure 26**

**installing the muffler:**

1. Position the muffler correctly and slide it onto the outlet side of the Y collector - link pipe **(Figure 27).**



**Figure 27**

2. Attach the springs at the Akrapovic muffler - collector-link pipe joint **(Figure 28).**



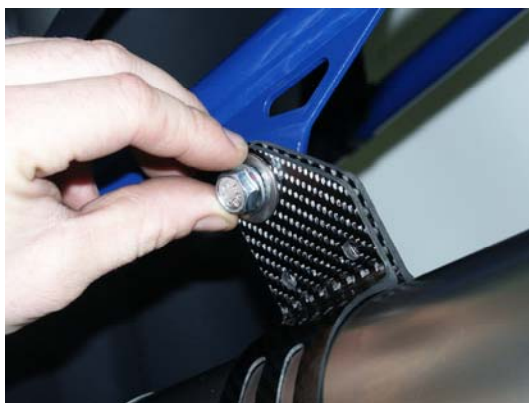
**Figure 28**

3. Correctly position the double carbon-fiber clamp and slide it onto muffler, bear in mind the **right offset** of the carbon-fiber clamp viewed from the rear; **WARNING:** open the clamp to slightly wider than the diameter of the outer sleeve of the muffler – do not scrape it along the muffler outer sleeve! (**Figure 29**).



**Figure 29**

4. Tighten the carbon-fiber clamp onto the stock chassis hanging bracket on the frame - use the bolt and washers supplied in the Akrapovic kit. Do not fully tighten. Make sure the additional parts from the Akrapovic kit are correctly installed (**Figure 30**).



**Figure 30**

5. Check the position of the Akrapovic Slip-on system. Make sure the exhaust system is not touching other parts of the motorcycle. Tighten fully the Akrapovic carbon-fiber clamp (**Figure 31, 32**).



**Figure 31**



**Figure 32**



**final installation:**

1. Replace the belly shield (**tightening torque: M6=9.8Nm(87inlb) ; M8=26Nm(20ftlb)**)
2. Clean grease spots:
  - a. Muffler – titanium outer sleeve: use a soft cloth sprayed with a multi-purpose spray lubricant (WD-40 or equivalent).
  - b. Titanium headers, collector-link pipe : use a soft cloth sprayed with a multi-purpose spray lubricant (WD-40 or equivalent).Cleaning will prevent spots from burning onto the surface. Do not use aggressive chemical cleaners, because they can damage the sticker.
3. Position of the installed Akrapovic Evolution system (**Figure 33**).



*Figure 33*

4. **WARNING:** after running engine for 30 minutes, retighten the bolts on the Akrapovic carbon-fiber heat shield !

Check the operation of the brakes and suspension. Make sure all the bolts are sufficiently tightened. In case the exhaust system touches the cowling or other parts repeat the adjustment of the exhaust system or contact your authorized dealer.

**! IT IS NORMAL IF WHITE SMOKE COMES OUT OF THE MUFFLER ON FIRST OPERATION.**

**! DO NOT STAND BEHIND THE MUFFLER ON FIRST OPERATION.**

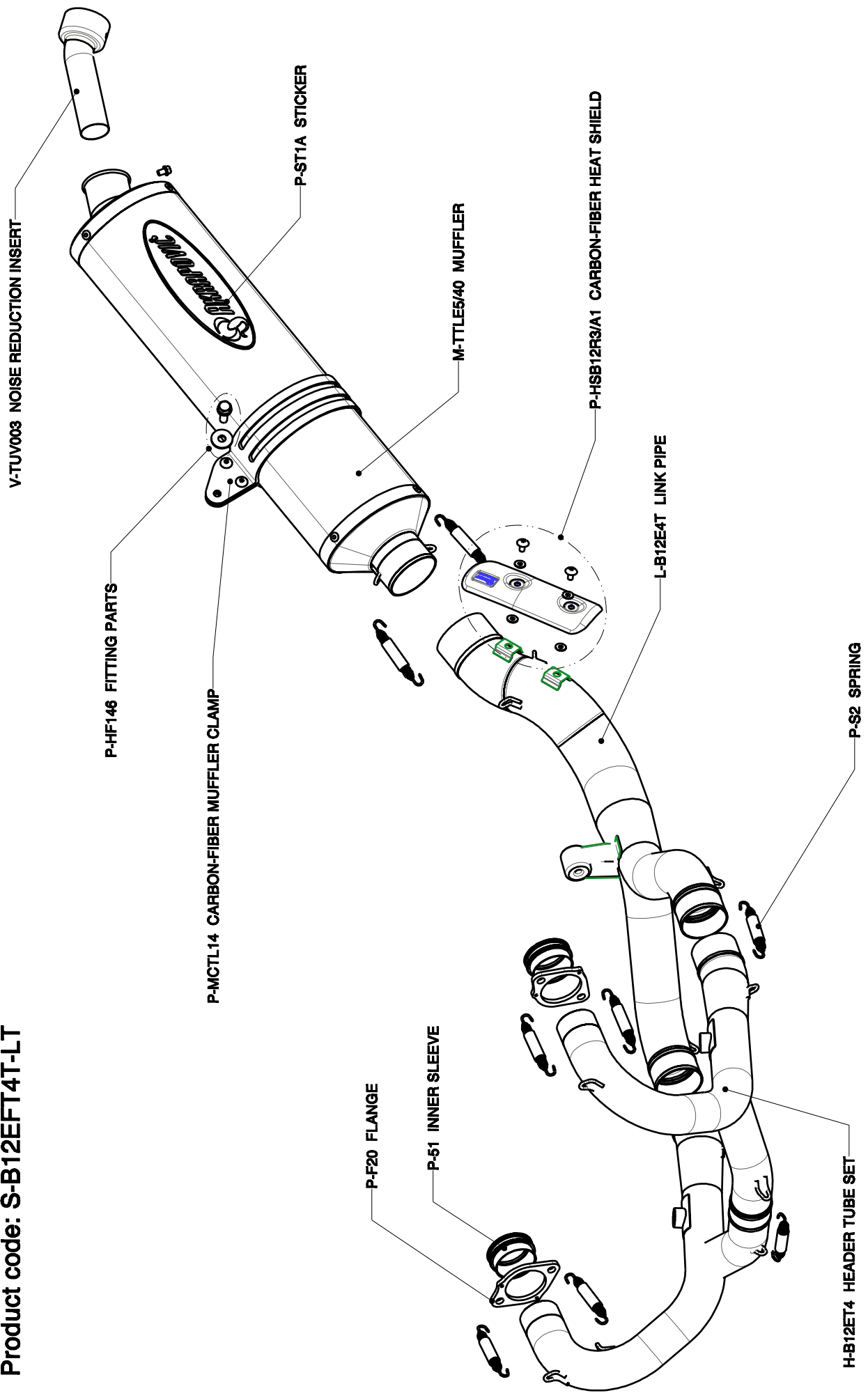
**! DO NOT USE AUTOMOTIVE WHEEL CLEANERS OR ANY CLEANING PRODUCTS WHICH CONTAIN ACIDIC ADDITIVES TO CLEAN AKRAPOVIC EXHAUST SYSTEMS.**

**MAINTENANCE OF THE AKRAPOVIC EXHAUST SYSTEM**

1. Clean the titanium muffler outer sleeve with a multi-purpose spray lubricant (WD-40 or equivalent ). Do not use aggressive chemical cleaners, because they can damage the sticker. A change in the color of the exhaust system is normal due to the high temperatures.
2. The wearing out of the muffler silencing material depends on the type of the motor and riding style. Contact your dealer/serviceman if visible changes appear on muffler's outer sleeve or the noise level is increased.
3. Periodically ensure that all the bolts and springs are sufficiently tight.

**BMW HP2 Enduro/Complete exhaust system evolution line/Model year: 2005, 2006, 2007**

**Product code: S-B12EFT4T-LT**



**WARNING:**

Please note that certain aftermarket exhaust systems may not comply with applicable California laws and regulations, and may therefore be prohibited for use on California highways or roads, or on roads or vehicles otherwise subject to emissions control requirements.

Akrapovič exhaust systems for automobiles and motorcycles mounted downstream of the catalytic converter (also known as “cat-back systems”) are considered “replacement parts” in California by the California Air Resources Board (CARB), and do not require an exemption or executive order from CARB to be sold in California. However, California prohibits the use of any aftermarket exhaust system that modifies, removes or replaces original equipment catalysts, unless CARB has issued an Executive Order as to such part or system.

Further, Akrapovič parts or exhaust systems used or intended for use on “racing vehicles” (i.e. a competition vehicle used exclusively for competition on closed-course circuits) do not require an exemption or Executive Order from CARB to be sold in California. However, such parts are prohibited from use on California public highways or roads, even if occasionally used “off-road.”