



YAMAHA YZF R6

(2006 - 2007)

www.akrapovic.com

RACING & EVOLUTION OPEN EXHAUST SYSTEM

RACING & EVOLUTION STREET LEGAL EXHAUST SYSTEM

Like the machine itself, the Akrapovic Racing and Evolution systems for the Yamaha rocket are designed for racing-oriented riders. Both systems deliver significantly increased performance, and we shouldn't forget to mention the visual enhancement of the Akrapovic HEXAGONAL muffler, which fits beautifully with the aggressive lines of the R6. The muffler includes a noise damper in order to restrict noise output levels.

PERFORMANCE

Measurements of the Akrapovic EVOLUTION system on the YAMAHA YZF R6 (without muffler insert):

Power & Torque: the Akrapovic Racing / Evolution system is well suited to its task. Since the bike is designed for racing, the rpm range and max. power output ranges are also high. The power increase with the Akrapovic system is substantial, and can be seen from 7000 rpm right to the top of the range. At 14500 rpm we measured 119.5 HP, with max. increased power of 7.3 HP at 9200 rpm.

CONFIGURATION

The Akrapovic Racing and Evolution systems are composed of conical header tubes, conical collectors and a conical link pipe. They differ only in their selection of tubing materials. The Racing uses stainless steel tubes, and the Evolution titanium. The tubes are attached to each other with sleeve joints secured with silicon-shielded springs. The muffler for both systems is the HEXAGONAL design, with a titanium inlet cap, perforated inner sleeve and outer sleeve, and a carbon-fiber outlet cap. It is attached to the bike using an Akrapovic carbon-fiber clamp. The systems are also equipped with interference crossover tubes between the two collectors. They also come with attachments for mounting a lambda sensor.

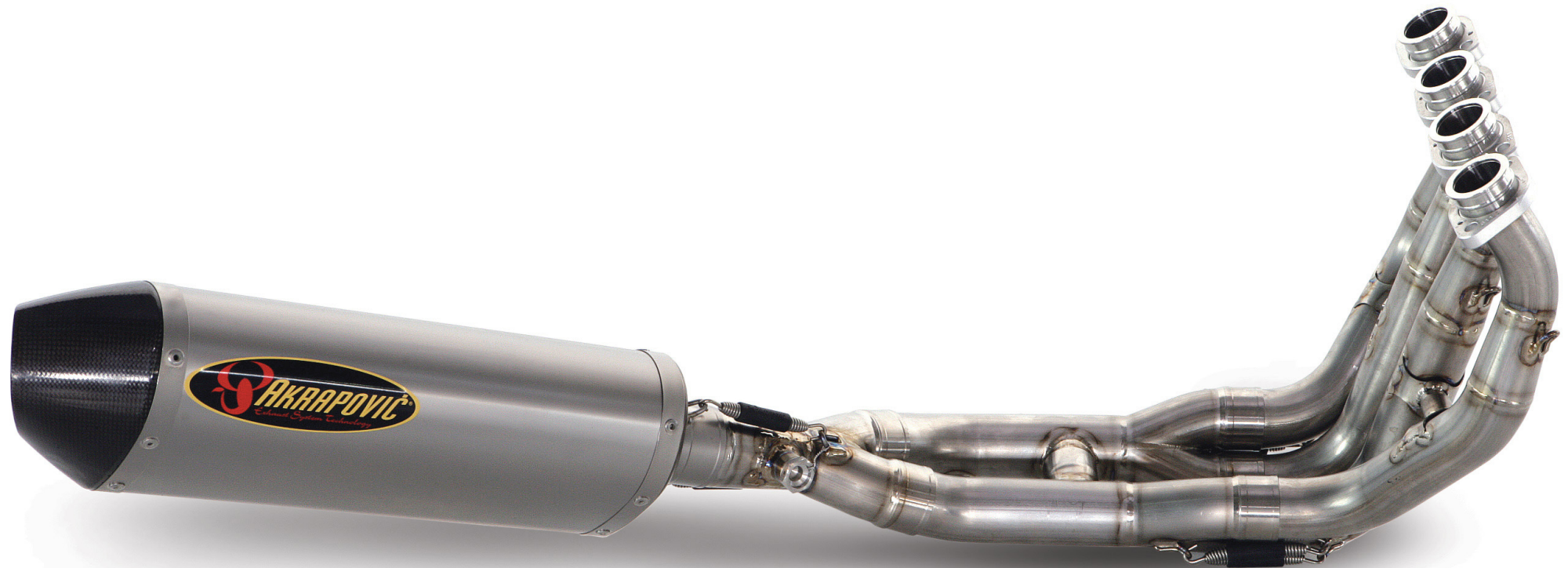
	PERFORMANCE		
	stock	AKRAPOVIC	max. increased power
max. rear wheel power HP / rpm <small>(measured on SuperFlow Cyle Dyn)</small>	113.6 / 14560	119.5 / 14500	7.3 / 9200

	CONFIGURATION		
	header tubes	collector	link pipe
material	TITANIUM (Evolution) STAINLESS STEEL (Racing)	TITANIUM (Evolution) STAINLESS STEEL (Racing)	TITANIUM (Evolution) STAINLESS STEEL (Racing)
tube shape	CONICAL	CONICAL	CONICAL

interference crossover tubes	YES	lambda sensor	YES
header tube inner sleeves	S.S. CNC MACHINED	header tube flanges	ALU CNC MACHINED
header tubes - collector connection	SLEEVE JOINT + SILICON SHIELDED SPRING	collector / header tube - link pipe connection	SLEEVE JOINT + SILICON SHIELDED SPRING
link pipe - muffler connection	SLEEVE JOINT + SILICON SHIELDED SPRING	muffler inlet cap / outlet cap	TITANIUM / CARBON-FIBER
muffler metal interior	TITANIUM	muffler outer sleeve	TITANIUM
muffler clamp	CARBON-FIBER ROAD	muffler bracket	-
muffler insert	EU	-	heat shield
	US	-	catalytic converter

	ADDITIONAL DATA				
	stock	AKRAPOVIC		difference	
		RACING	EVOLUTION	stock - RACING	stock - EVOLUTION
weight comparison (kg)	9.25	4.66	3.53	4.59	5.52
noise measurements (dB / rpm)	stock		AKRAPOVIC		
	97 / 7250		97 / 7250		
possibility of periodic service without removing A.E.S.	oil		oil filter		
	YES		YES		
legal for street use	NO / YES (street legal)				

Technical specifications of Akrapovic exhaust systems and related products subject to change without notice.



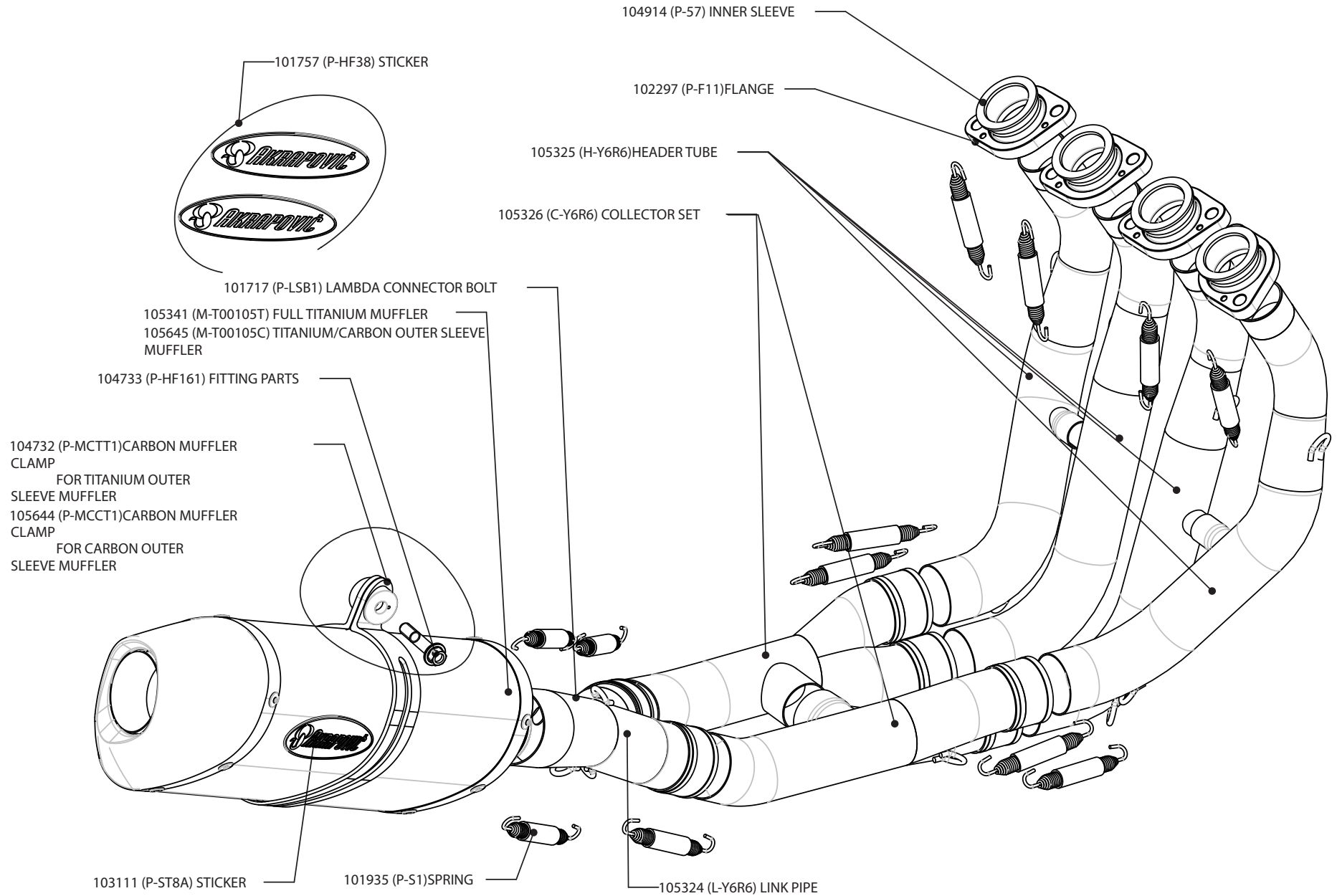
Product code: 105647 (S-Y6R6-TC) 105322(S-Y6R6-TT) racing
105649 (S-Y6RFT6TL-TC) 105321 (S-Y6RFT6TL-TT) evolution
105468 (S-Y6R6-HTT) 105648 (S-Y6R6-HTC) racing street legal
105650 (S-Y6RFT6TL-HTC) 105467 (S-Y6RFT6TL-HTT) evolution street legal

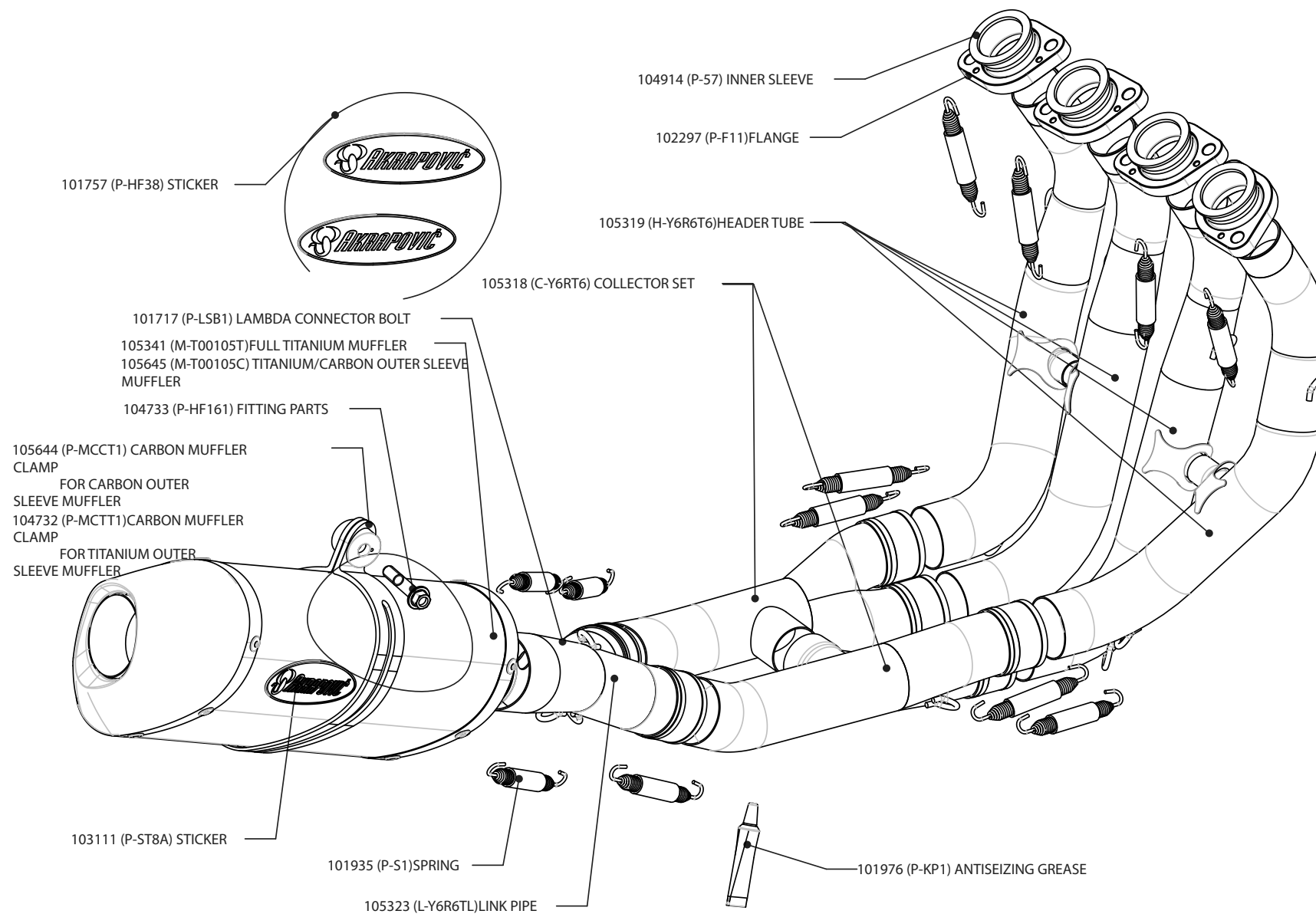


Product code: 105647 (S-Y6R6-TC) 105322(S-Y6R6-TT) racing
105649 (S-Y6RFT6TL-TC) 105321 (S-Y6RFT6TL-TT) evolution
105468 (S-Y6R6-HTT) 105648 (S-Y6R6-HTC) racing street legal
105650 (S-Y6RFT6TL-HTC) 105467 (S-Y6RFT6TL-HTT) evolution street legal

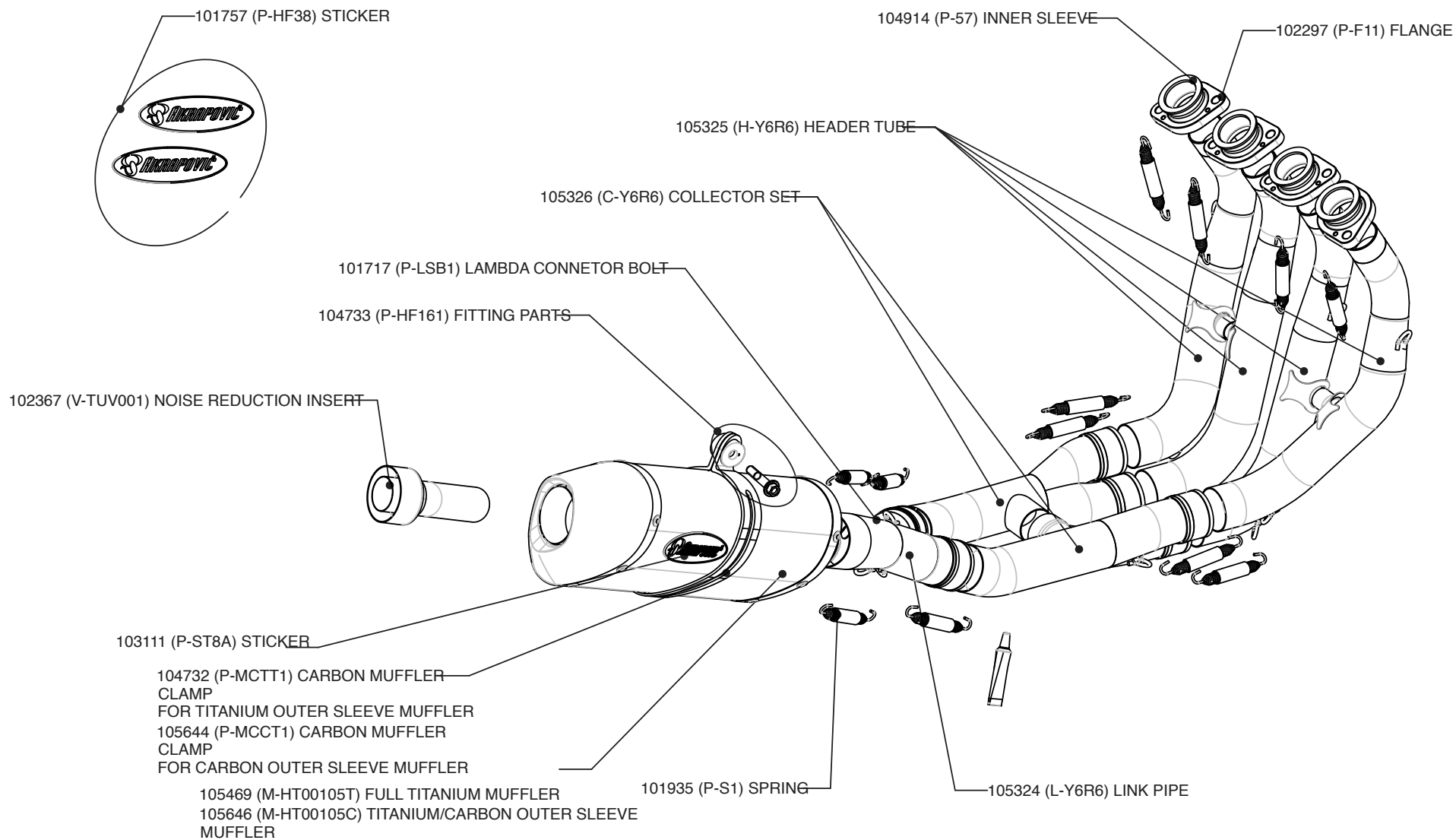


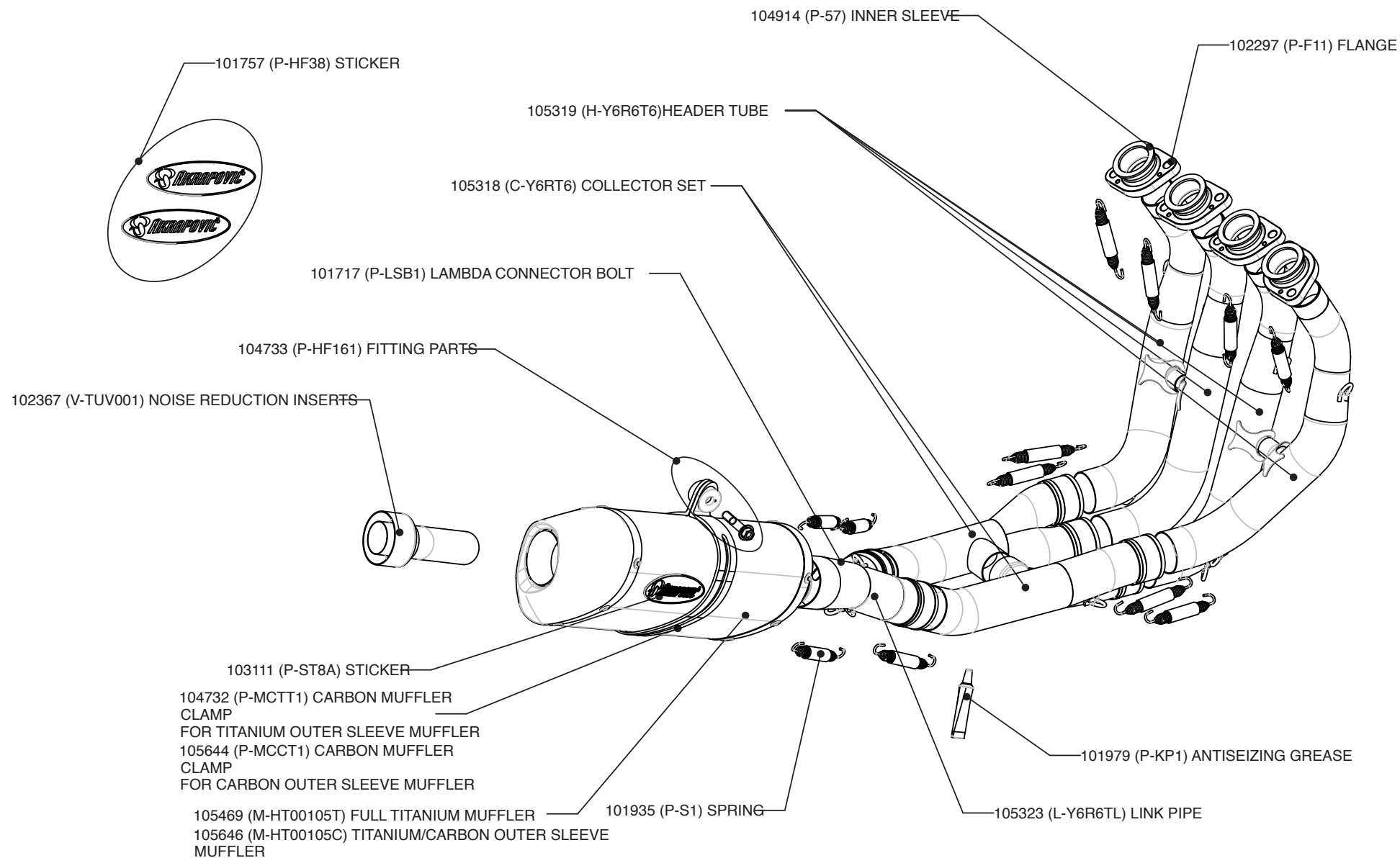
Product code: 105647 (S-Y6R6-TC) 105322(S-Y6R6-TT) racing
105649 (S-Y6RFT6TL-TC) 105321 (S-Y6RFT6TL-TT) evolution
105468 (S-Y6R6-HTT) 105648 (S-Y6R6-HTC) racing street legal
105650 (S-Y6RFT6TL-HTC) 105467 (S-Y6RFT6TL-HTT) evolution street legal

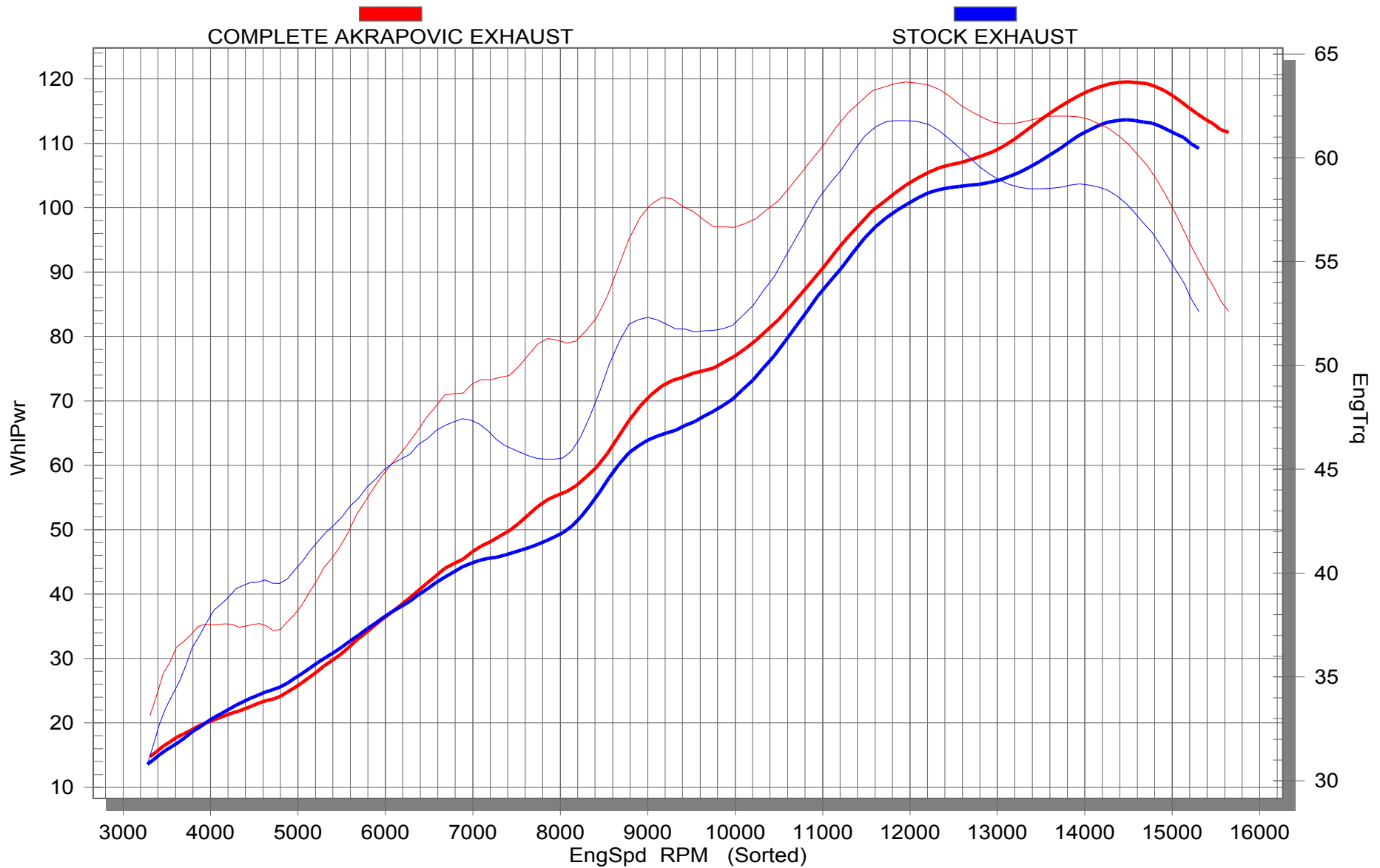




Product code: 105649 (S-Y6RFT6TL-TC) 105321 (S-Y6RFT6TL-TT) evolution







Product code: 105647 (S-Y6R6-TC) 105322(S-Y6R6-TT) racing
 105649 (S-Y6RFT6TL-TC) 105321 (S-Y6RFT6TL-TT) evolution
 105468 (S-Y6R6-HTT) 105648 (S-Y6R6-HTC) racing street legal
 105650 (S-Y6RFT6TL-HTC) 105467 (S-Y6RFT6TL-HTT) evolution street legal