



Kawasaki KLX 110 (2003,2004)

Racing & Evolution Exhaust System

Akrapovic Racing & Evolution Exhaust System

for the Kawasaki KLX 110 (2003, 2004)

Our top-line exhaust systems are also available for the little Kawasaki. With the RACING or EVOLUTION system, the KLX 110 will show a much livelier character, allowing younger riders to experience the joys of Akrapovic exhaust systems. Both systems have a built-in noise damper in order to conform to noise level regulations.

PERFORMANCE

Measurements of the Akrapovic EVOLUTION system on the KAWASAKI KLX 110 (without noise damper):

Power: the smaller-displacement engine comes to life with the EVOLUTION system, with a noticeable power increase which runs through the entire rpm range. Max. power of 6.7 HP is reached at the top of the range at 7600 rpm.

Torque: the torque curve is even more improved, with a major increase in torque starting from around 6000 rpm.

CONFIGURATION

The configurations of the Akrapovic RACING and EVOLUTION systems for the KLX 110 are identical. They differ only in the selection of materials. Thus the header assembly for the RACING model is made of high-quality stainless steel, while the EVOLUTION system is distinguished by the use of titanium. Due to the specific design of the bike, the header tube and link pipe are joined to form a single component. Although the bike is an off-road machine, the muffler is a Road design. It has a titanium outer sleeve, inlet and outlet caps and inner perforation. It is joined to the header assembly with a sleeve joint held together with a silicon-shielded tensioning spring. The muffler is attached to the frame of the KLX 110 with a metal chassis hanging bracket which is welded to the muffler. The muffler has a built-in noise damper in order to conform to noise level regulations.

| | PERFORMANCE | | |
|--|-------------|------------|----------------------|
| | stock | AKRAPOVIC | max. increased power |
| max. rear wheel power HP / rpm (measured on SuperFlow Cycle Dyn) | 5.6 / 7800 | 6.7 / 7600 | 1.2 / 8000 |

| | CONFIGURATION | | |
|------------|--|-----------|-----------|
| | header tubes | collector | link pipe |
| material | TITANIUM (Evolution) STAINLESS STEEL (Racing) | - | - |
| tube shape | CONICAL | - | - |

| | | | |
|-------------------------------------|---------------------------------------|--|---------------------|
| interference crossover tubes | - | lambda sensor | - |
| header tube inner sleeves | S.S. CNC MACHINED | header tube flanges | S.S. LASER CUT |
| header tubes - collector connection | - | collector / header tube - link pipe connection | - |
| link pipe - muffler connection | SLEEVE JOINT + SILICON SHILDED SPRING | muffler inlet cap /outlet cap | TITANIUM / TITANIUM |
| muffler metal interior | TITANIUM | muffler outer sleeve | TITANIUM |
| muffler clamp | - | muffler bracket | TITANIUM |
| muffler insert | NOISE DAMPER | heat shield | - |

| OPTIONS | | | |
|-----------|--------------|-----------------|-------------|
| link pipe | noise damper | muffler bracket | heat shield |
| - | - | - | - |

| | ADDITIONAL DATA | | | | |
|---|-----------------|-----------|------------|----------------|-------------------|
| | stock | AKRAPOVIC | | difference | |
| | | RACING | EVOLUTION | stock - RACING | stock - EVOLUTION |
| weight comparison (kg) | 1.68 | 1.30 | 1.13 | 0.38 | 0.55 |
| noise measurements (dB / rpm) | stock | | AKRAPOVIC | | |
| | 88 / 3750 | | 88 / 3750 | | |
| possibility of periodic service without removing A.E.S. | oil | | oil filter | | |
| | YES | | YES | | |
| legal for street use | NO | | | | |

Technical specifications of Akrapovic exhaust systems and related products subject to change without notice.

Product code: 103780 (S-K1MR1-T) Racing
102771 (S-K1MET1-T) Evolution

Akrapovic Racing & Evolution Exhaust System

for the Kawasaki KLX 110 (2003, 2004)



Akrapovic Exhaust System Technology copyright 2004, all rights reserved

Off-Road
Program

Product code: 103780 (S-K1MR1-T) Racing
102771 (S-K1MET1-T) Evolution

Akrapovic Racing & Evolution Exhaust System

for the Kawasaki KLX 110 (2003, 2004)



Akrapovic Exhaust System Technology copyright 2004, all rights reserved

Off-Road
Program

Product code: 103780 (S-K1MR1-T) Racing
102771 (S-K1MET1-T) Evolution

Akrapovic Racing & Evolution Exhaust System for the Kawasaki KLX 110 (2003, 2004)



Akrapovic Exhaust System Technology copyright 2004, all rights reserved

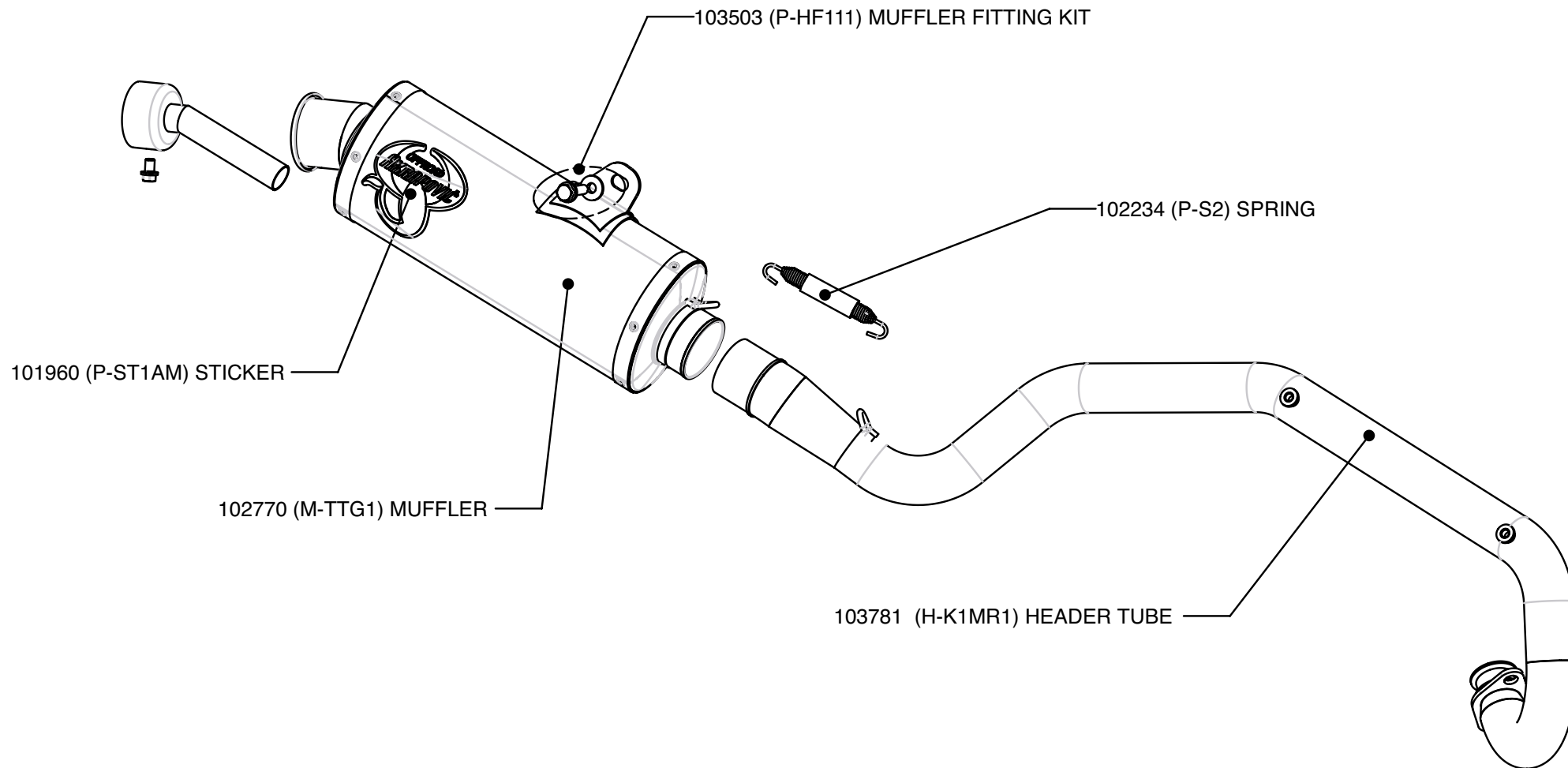
Off-Road
Program

Product code: 103780 (S-K1MR1-T) Racing
102771 (S-K1MET1-T) Evolution



Akrapovic Racing & Evolution Exhaust System

for the Kawasaki KLX 110 (2003, 2004)



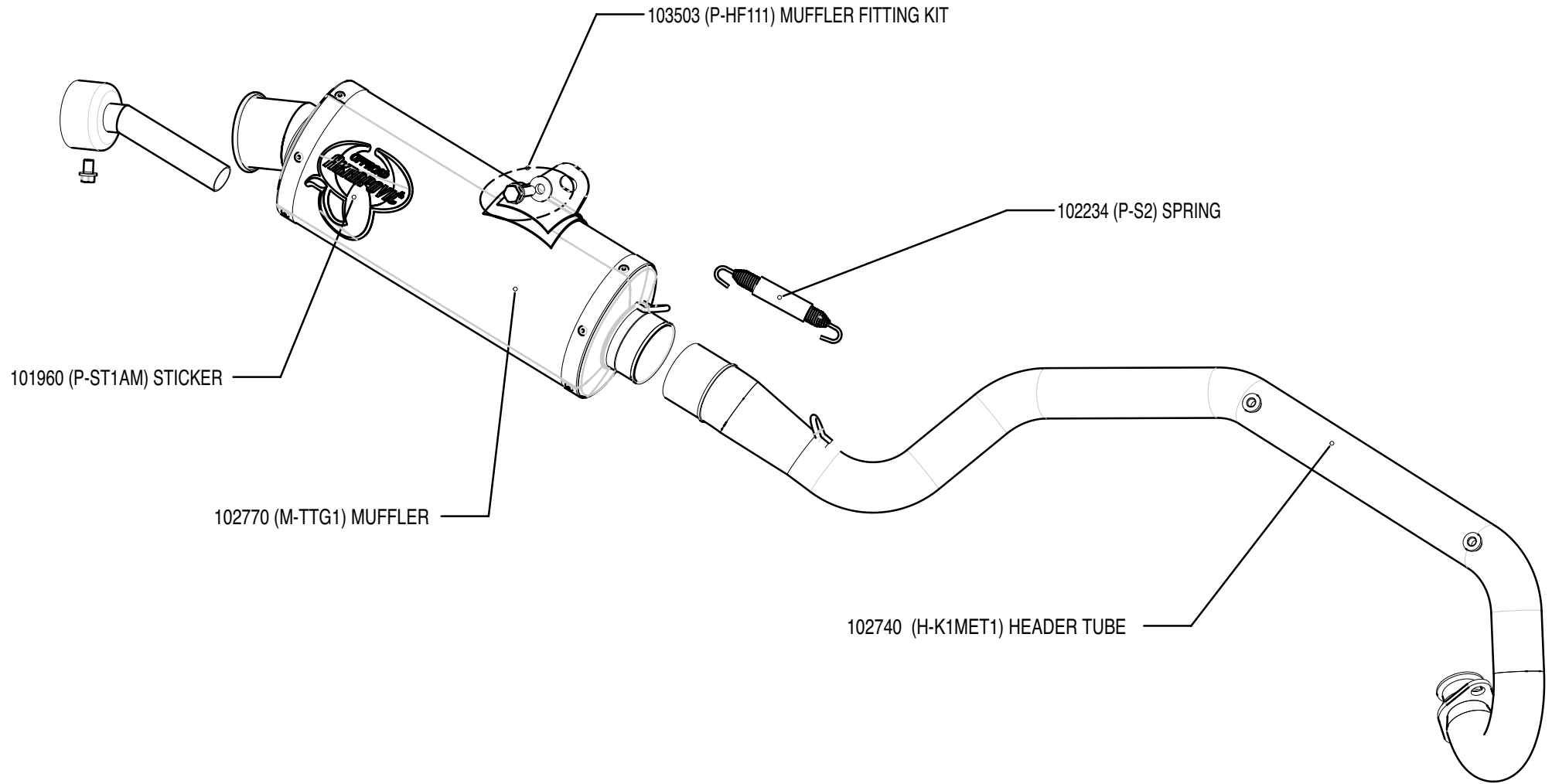
Akrapovic Exhaust System Technology copyright 2004, all rights reserved

Off-Road
Program

Product code: 103780 (S-K1MR1-T) Racing

Akrapovic Racing & Evolution Exhaust System

for the Kawasaki KLX 110 (2003, 2004)



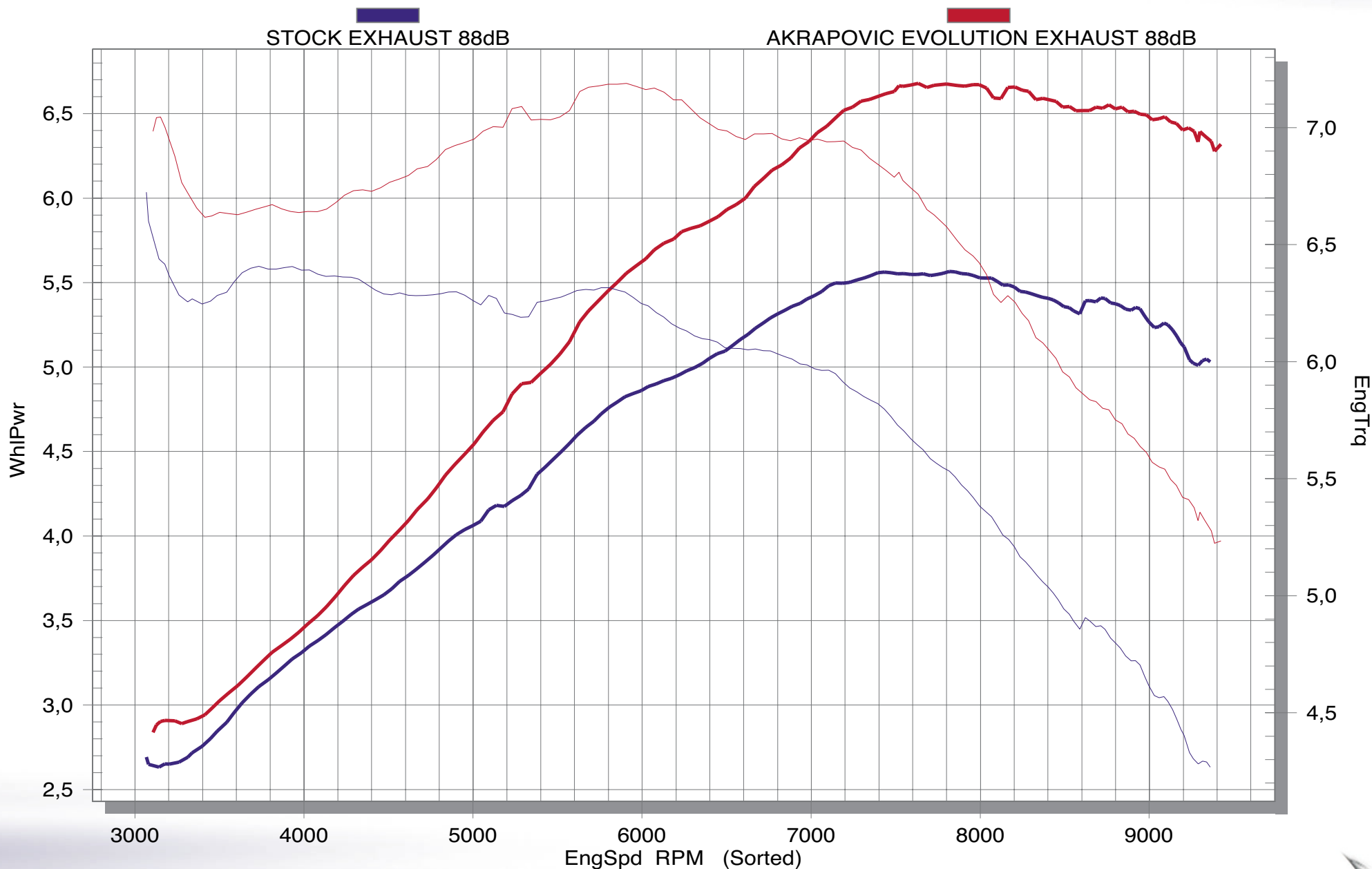
Akrapovic Exhaust System Technology copyright 2004, all rights reserved

Off-Road Program

Product code: 102771 (S-K1MET1-T) Evolution

Akrapovic Racing & Evolution Exhaust System

for the Kawasaki KLX 110 (2003, 2004)



Akrapovic Exhaust System Technology copyright 2004, all rights reserved

Off-Road Program

Product code: 103780 (S-K1MR1-T) Racing
102771 (S-K1MET1-T) Evolution

