



## Installation instructions:

# AKRAPOVIC TWIN RACING & EVOLUTION EXHAUST SYSTEM for the HONDA CRF250R (2006 – 2009)

Congratulations on purchasing an Akrapovic exhaust system. Please read these installation instructions carefully. If you have any trouble installing the system please contact your authorized dealer!

### IMPORTANT INFORMATION

#### Exclusion of Certain Liability

1. The manufacturer, importer or dealer shall not be liable for any incidental damage including personal injury or any other damages caused by improper installation or operation of the Akrapovic exhaust system. When installing the Akrapovic exhaust system be careful that the exhaust system does not touch other parts sensitive to high temperature.
2. Akrapovic makes no representation or warranties with regard to damage caused by the improper installation, use and maintenance of the Akrapovic exhaust system. The warranty is limited to defects recognized by our technical department and to normal use, and excludes items subject to normal wear (gaskets and damping wool). The guarantee is void in case of accident, modification, improper or competition use.
3. Do not attempt to install the Akrapovic exhaust system on a motorcycle for which it was not made or tested by Akrapovic.
4. When the exhaust system gets very hot during operation, be careful not to burn yourself on the exhaust system or parts which are in direct contact with it, even when the motor is not running. Also protect other people, especially children, from the injuries mentioned above.
5. In some cases Akrapovic exhaust system kits contain chemical products (ceramic anti-seizing grease; bolt sealant). Handle with care, do not inhale or swallow. Avoid excessive contact with skin, eyes or mucous membranes. Keep out of reach of children.
6. Technical specifications of Akrapovic exhaust systems and related products subject to change without notice.

#### Trademarks

The Akrapovic Exhaust System Technology logo is a registered trademark of Akrapovic d.d.

#### Akrapovic website

Information about Akrapovic exhaust systems and related products is available on the Akrapovic website at:

<http://www.akrapovic.com/>

#### Copyright

No part of the Akrapovic exhaust system or its documentation may be reproduced or distributed in any form or by any means without the prior written authorization of the Akrapovic company.

© Akrapovic, d.d. All rights reserved.

#### Symbols

The following symbols are used throughout these installation instructions:



**USE BOLT SEALANT;** Apply 1 to 2 small drops of bolt sealant onto the cleaned and degreased threads before tightening bolts. **WARNING! Avoid contact with skin, eyes and mucous membranes. Do not inhale fumes. Keep out of the reach of children.**



**USE ANTI-SEIZING GREASE (white tube);** Prevents seizing, corrosion and excessive wear between the titanium components of your exhaust system. **WARNING! Avoid eye contact. Avoid excessive skin contact. Keep out of the reach of children.**



**USE ANTI-SEIZE LEAD-FREE COPPER PASTE (black tube);** Provides trouble-free and long-lasting protection against seizing, corrosion and rusting of bolts, threaded ends, nuts, joints, etc. Also protects against vibration, wear and impact. **WARNING! Avoid eye contact. Avoid excessive skin contact. Keep out of the reach of children.**

## **INSTALLATION INSTRUCTIONS**

**⚠ BEFORE INSTALLING CHECK SCHEMATIC OF THE EXHAUST SYSTEM!**

**! IF ANY ITEMS IN THE AKRAPOVIC EXHAUST SYSTEM PACKAGE ARE MISSING PLEASE CONTACT YOUR AUTHORIZED DEALER. KEEP THE SCHEMATIC FOR FUTURE REFERENCE.**

**! THESE INSTALLATION INSTRUCTIONS MUST BE READ CAREFULLY IN ORDER TO ENSURE PROPER INSTALLATION AND OPERATION OF THE AKRAPOVIC EXHAUST SYSTEM.**

**! THE EXHAUST SYSTEM CAN BE EXTREMELY HOT. ALLOW THE MOTORCYCLE TO COOL DOWN BEFORE BEGINNING INSTALLATION.**

**⚠ WE ADVISE YOU TO LEAVE INSTALLATION TO A QUALIFIED SERVICEMAN. IMPROPER INSTALLATION MAY RESULT IN A SHORTER LIFETIME OF THE EXHAUST SYSTEM AND/OR DAMAGE TO THE MOTORCYCLE.**

 T-handle 8mm wrench  
T-handle 10mm wrench  
T-handle 12mm wrench  
T-handle 13mm wrench  
Spring puller

### **REMOVAL OF STOCK EXHAUST SYSTEM**

1. Put the motorcycle on a side stand, we recommend a racing stand.
2. For easier access to the mufflers remove both rear panels (**Figure 1, 2**).



Figure 1



Figure 2

3. Untighten the bolts from the metal clamps at the muffler – link pipes joints (**Figure 3**) and unscrew and remove the bolts from the muffler metal brackets (**Figure 4**). Remove both mufflers (**Figure 5**).



Figure 3



Figure 4



Figure 5

4. Untighten the bolt from the metal clamp at the link pipe – header tube joint and unscrew the bolt from the link pipe bracket (Figure 6, 7). Remove the link pipe (Figure 8).

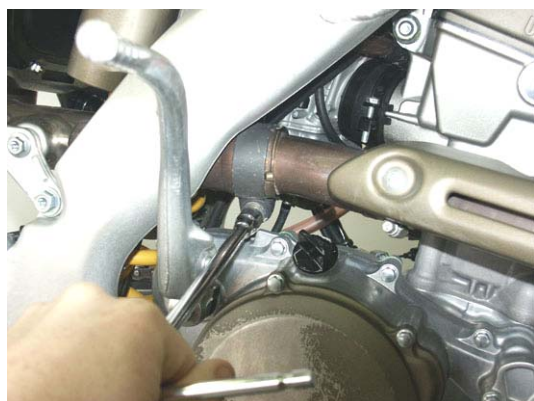


Figure 6



Figure 7



Figure 8

5. Unscrew and remove the nuts on the header tube flange and remove the stock header tube (Figure 9, 10).



Figure 9



Figure 10

### **INSTALLATION OF THE AKRAPOVIC TWIN RACING OR EVOLUTION EXHAUST SYSTEM**

1. Correctly position and install the Akrapovic carbon-fiber heat shield onto the header tube. Make sure the heat / distance washers are correctly installed (Figure 11, 12, 13).



Figure 11



Figure 12



Figure 13



2. Set up the inner sleeve together with the flange and springs; make sure they are correctly oriented; use stock gasket and hand tighten the flange (Figure 14, 15).



Figure 14



Figure 15

3. Install the header tube and attach the springs (Figure 16, 17). **WARNING: make sure, that springs pull the header all the way into the sleeve – use rubber mallet if necessary to tap the connection into place!**



Figure 16



Figure 17

4. Correctly position the link pipe and slide it onto the header tube and attach the spring at the link pipe – header tube joint (Figure 18, 19). **For evolution exhaust only: coat the interior side of the input of the titanium link pipe with Akrapovic ceramic anti-seizing grease (white tube).** **WARNING: make sure, that spring pull the link pipe all the way onto the header– use rubber mallet if necessary to tap the connections into place!**

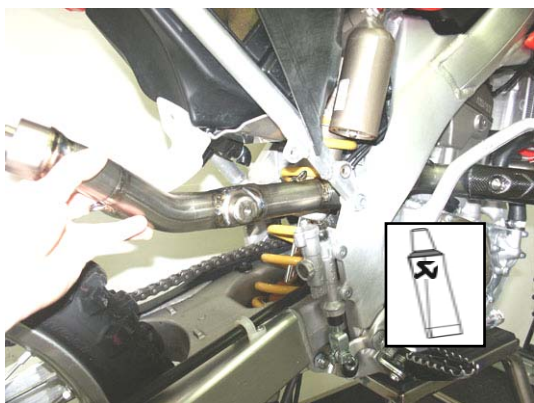


Figure 18



Figure 19

5. Hand tighten the bolt on the link pipe bracket (**Figure 20**).



Figure 20

6. Correctly position the mufflers and slide them onto the link pipes. Attach the springs at the mufflers - link pipes joints (**Figure 21, 22**). **For evolution exhaust only:** coat the interior side of the input of the muffler inlet cap with Akrapovic ceramic anti-seizing grease (white tube) on both mufflers. **WARNING:** make sure, that springs pull the mufflers all the way onto the link pipes – use rubber mallet if necessary to tap the connections into place!



Figure 21



Figure 22

7. Correctly position the carbon-fiber clamps and slide them onto the mufflers - bear in mind the left offset of the carbon-fiber clamp for the **right** muffler and right offset for the **left** muffler viewed from the rear (**Figure 23**). **WARNING:** open the clamp slightly wider than the diameter of the outer sleeve of the muffler – do not scrape it along the muffler outer sleeve! Install the aluminium collars and rubber dampers supplied in the Akrapovic kit on to the muffler clamp correctly (**Figure 24**).



Figure 23



Figure 24



8. Attach the carbon-fiber clamps to the stock chassis hanging brackets (**Figure 25**). Align the mufflers in respect to the motorcycle and tighten the bolts of the muffler clamps, link pipe bracket and header tube flange (**Figure 26, 27, 28**). Make sure the link pipe and header tube are not touching the engine or frame.

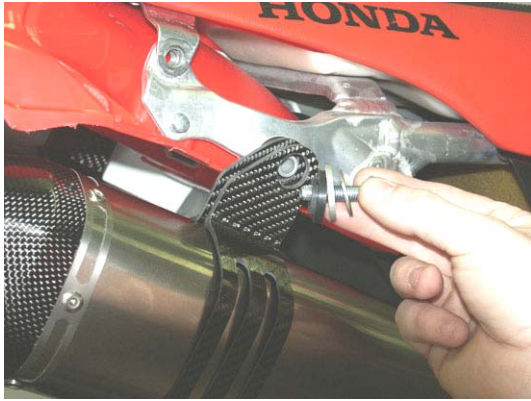


Figure 25

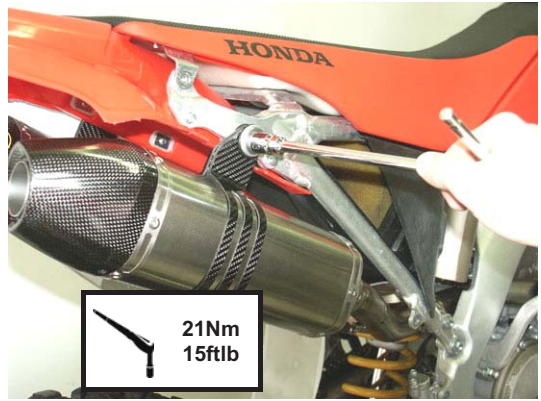


Figure 26

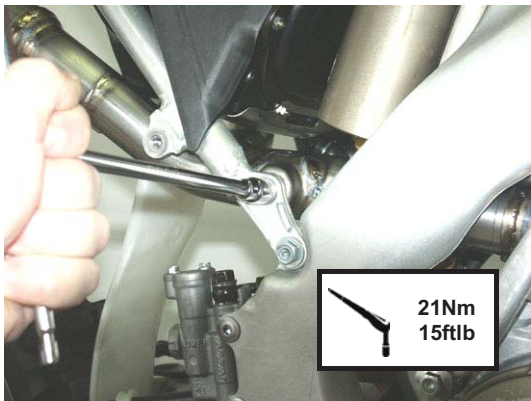


Figure 27

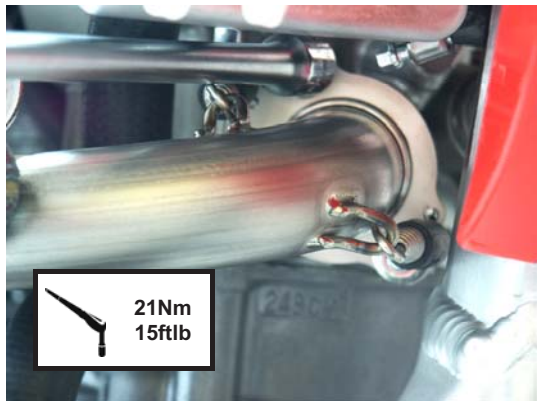


Figure 28

9. Reattach the rear panels (**Figure 29, 30, 31**).



Figure 29



Figure 30



Figure 31

**Final installation:**

1. Clean grease spots:
  - a. Muffler – titanium outer sleeve: use a soft cloth sprayed with a multi-purpose spray lubricant (WD-40 or equivalent).
  - b. Muffler – carbon-fiber end cap: use a soft dry cloth.
  - c. RACING - stainless steel link pipe, header tube: use a soft cloth sprayed with a contact cleaner, then wipe with a soft dry cloth.
  - d. EVOLUTION - titanium link pipe, header tube: use a soft cloth sprayed with a multi-purpose spray lubricant (WD-40 or equivalent).

Cleaning will prevent spots from burning onto the surface. Do not use aggressive chemical cleaners, because they can damage the sticker.
2. **WARNING: after running engine for 30 minutes, tighten the bolts on the Akrapovic carbon-fiber heat shield!**
3. Position of the correctly installed Akrapovic **TWIN RACING** or **TWIN EVOLUTION** system (Figure 32, 33, 34).



Figure 32





Figure 33



Figure 34

4. Check the operation of the brakes and suspension. Make sure all the bolts are sufficiently tightened. In case the exhaust system touches the cowling or other parts repeat the adjustment of the exhaust system or contact your authorized dealer.

**! IT IS NORMAL IF WHITE SMOKE COMES OUT OF THE MUFFLER ON FIRST OPERATION.**

**! DO NOT STAND BEHIND THE MUFFLER ON FIRST OPERATION.**

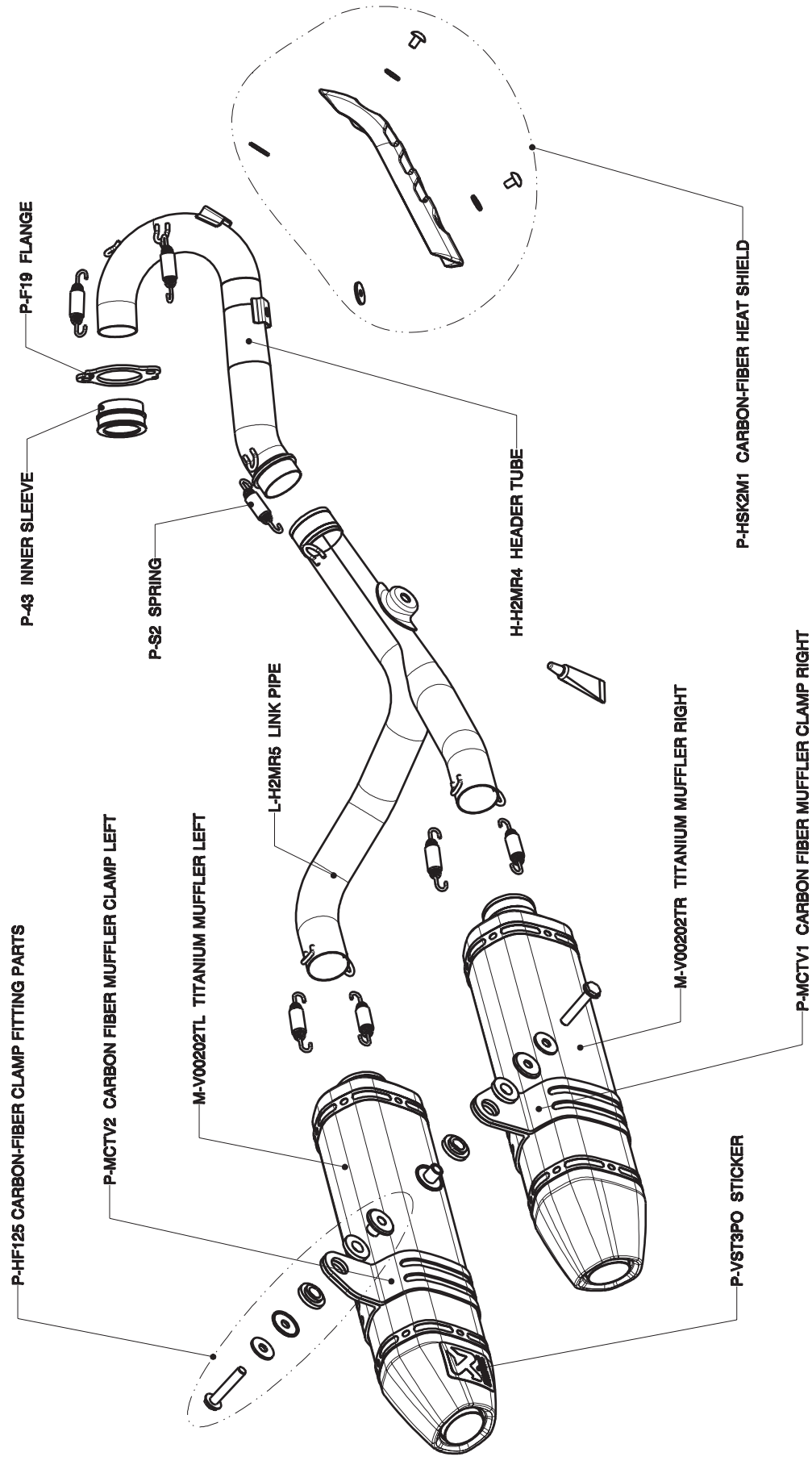
**! DO NOT USE AUTOMOTIVE WHEEL CLEANERS OR ANY CLEANING PRODUCTS WHICH CONTAIN ACIDIC ADDITIVES TO CLEAN AKRAPOVIC EXHAUST SYSTEMS.**

#### **MAINTENANCE OF THE AKRAPOVIC EXHAUST SYSTEM**

1. Clean the titanium exhaust components with a multi-purpose spray lubricant (WD-40 or equivalent ), carbon fiber exhaust components with soft and dry cloth and stainless steel components with soft cloth sprayed with contact cleaner, then wipe with soft and dry cloth. Do not use aggressive chemical cleaners, because they can damage the sticker. A change in the color of the exhaust system is normal due to the high temperatures.
2. The wearing out of the muffler silencing material depends on the type of the motor and riding style. Contact your dealer/serviceman if visible changes appear on muffler's outer sleeve or the noise level is increased.
3. Periodically make sure all the bolts and springs are sufficiently tight.

# HONDA CRF 250 R Complete exhaust system/Racing line-twin, model year: 2006, 2007

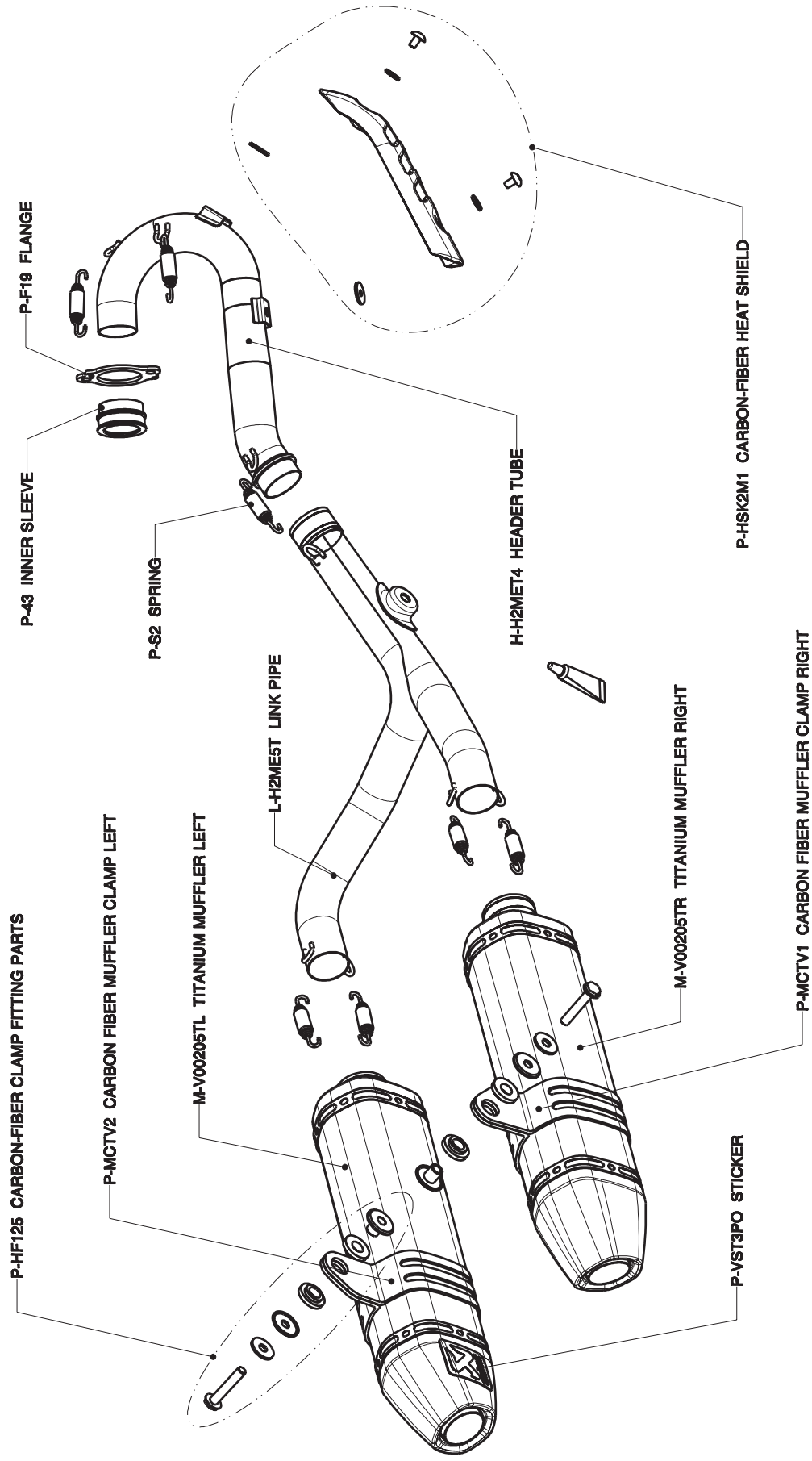
Product code: S-H2MR5-VT





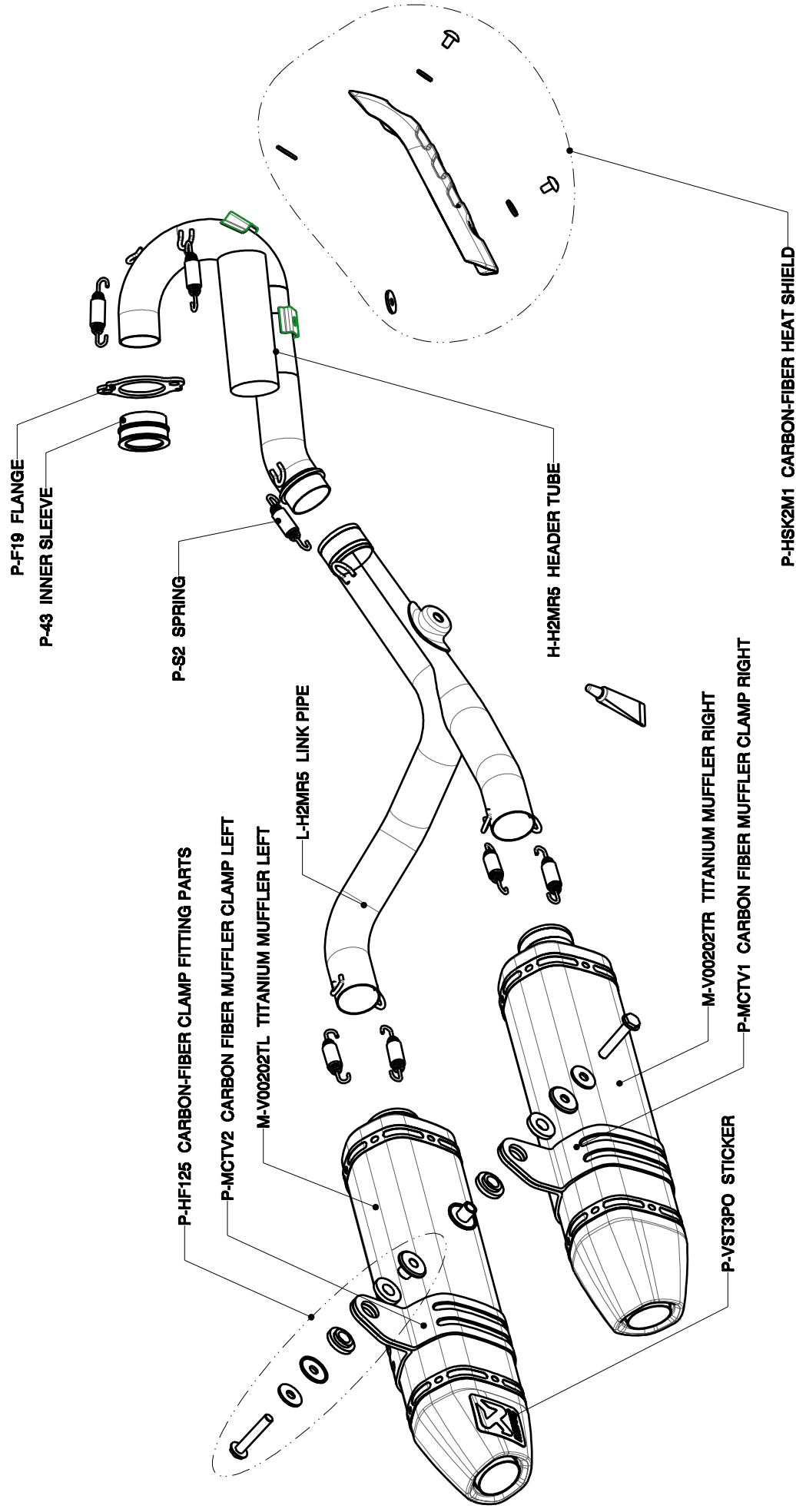
# HONDA CRF 250 R Complete exhaust system/Evolution line-twin, model year: 2006, 2007

Product code: S-H2MET5T-VT



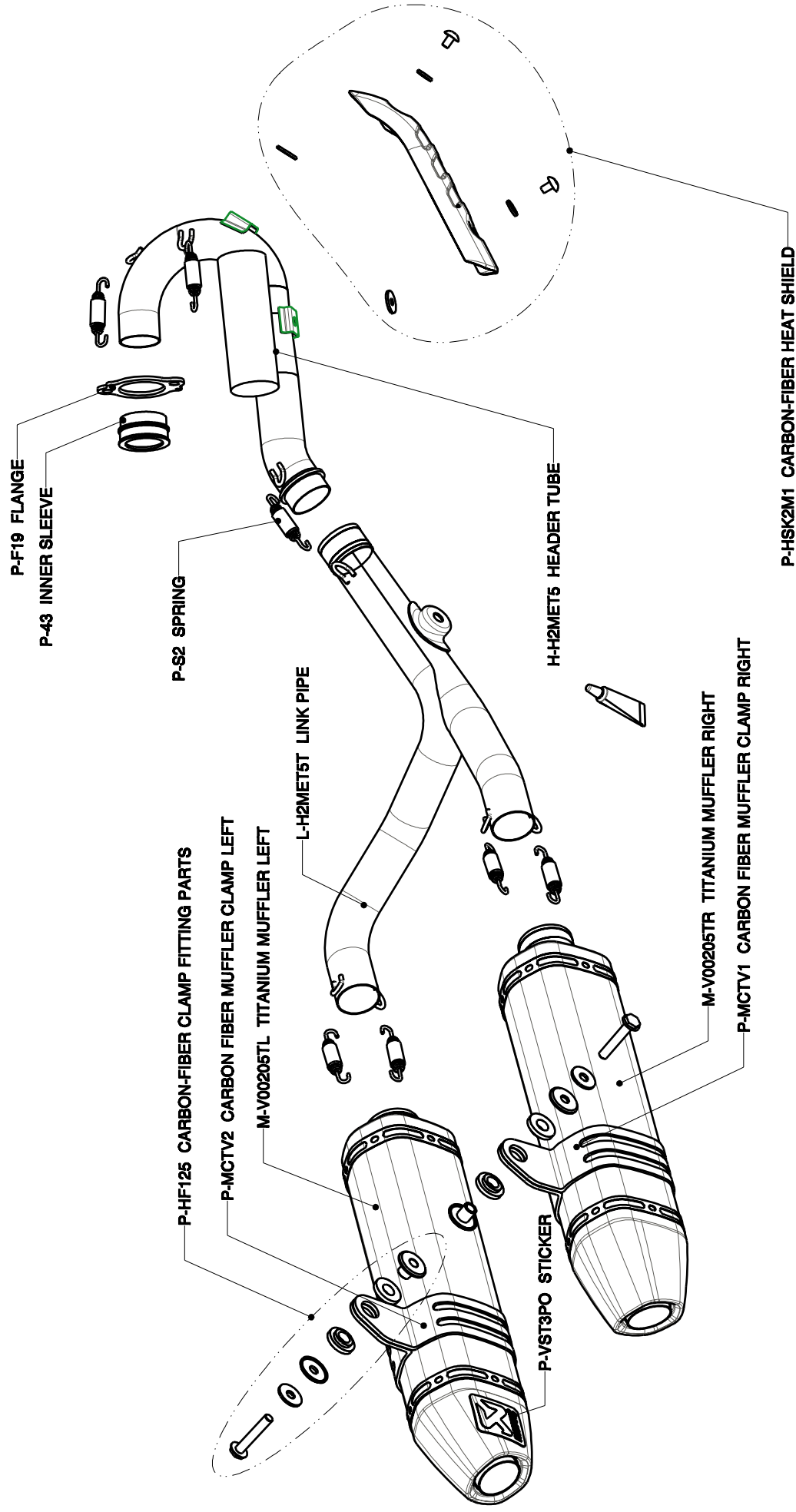
# HONDA CRF 250 R Complete exhaust system/Racing line-twin, model year: 2008-2009

Product code: S-H2MR6-VT



# HONDA CRF 250 R Complete exhaust system/Evolution line-twin, model year: 2008-2009

Product code: S-H2MET6T-VT





**WARNING:**

Please note that certain aftermarket exhaust systems may not comply with applicable California laws and regulations, and may therefore be prohibited for use on California highways or roads, or on roads or vehicles otherwise subject to emissions control requirements.

Akrapovič exhaust systems for automobiles and motorcycles mounted downstream of the catalytic converter (also known as “cat-back systems”) are considered “replacement parts” in California by the California Air Resources Board (CARB), and do not require an exemption or executive order from CARB to be sold in California. However, California prohibits the use of any aftermarket exhaust system that modifies, removes or replaces original equipment catalysts, unless CARB has issued an Executive Order as to such part or system.

Further, Akrapovič parts or exhaust systems used or intended for use on “racing vehicles” (i.e. a competition vehicle used exclusively for competition on closed-course circuits) do not require an exemption or Executive Order from CARB to be sold in California. However, such parts are prohibited from use on California public highways or roads, even if occasionally used “off-road.”