

Installation instructions:



AKRAPOVIC RACING & EVOLUTION EXHAUST SYSTEM for YAMAHA YZF R6 (2003)

Congratulations on purchasing an Akrapovic exhaust system. Please read this installation instructions carefully. If you have any trouble with installing the system please contact your authorized dealer!

IMPORTANT INFORMATION

Exclusion of Certain Liability

1. The manufacturer, importer or dealer shall not be liable for any incidental damage including personal injury or any other damages caused by improper installation or operation of the Akrapovic exhaust system. When installing the Akrapovic exhaust system be careful that the exhaust system does not touch other parts sensitive to high temperature.
2. Akrapovic makes no representation or warranties with regard to damage caused by the improper installation, use and maintenance of the Akrapovic exhaust system. The warranty is limited to defects recognized by our technical department and to normal use, and excludes items subject to normal wear (gaskets and damping wool). The guarantee is invalidated in case of accident, modification, improper or competition use.
3. Do not attempt to install the Akrapovic exhaust system on a motorcycle for which it was not made or tested by Akrapovic.
4. When the exhaust system gets very hot during operation, be careful not to burn yourself on the exhaust system or parts which are in direct contact with it, even when the motor is not running. Also protect other people, especially children, from the injuries mentioned above.
5. In some cases Akrapovic exhaust system kits contain chemical products (ceramic anti-seizing grease; bolt sealant). Handle with care, do not inhale or swallow. Avoid excessive contact with skin, eyes or mucous membranes. Keep out of the reach of children.
6. Technical specifications of Akrapovic exhaust systems and related products subject to change without notice.

Trademarks

The Akrapovic Exhaust System Technology logo is a registered trademark of Akrapovic d.â.

Akrpovic web site

Information about Akrapovic exhaust systems and related products is available on the Akrapovic web site at:
<http://www.akrapovic-exhaust.com/>

Copyright

No part of the Akrapovic exhaust system or its documentation may be reproduced or distributed in any form or by any means without the prior written authorization of the Akrapovic company.

© Akrapovic d.â. All rights reserved.

Symbols

The following symbols are used throughout this installation instructions:




INSTALLATION INSTRUCTIONS

Before installing check schematic of the exhaust system!

! IN CASE THAT SOME ITEMS IN THE AKRAPOVIC EXHAUST SYSTEM PACKAGE ARE MISSING PLEASE CONTACT YOUR AUTHORISED DEALER. KEEP THIS SCHEMATIC FOR FUTURE REFERENCE.

! IT IS ESSENTIAL TO READ THIS INSTALLATION INSTRUCTIONS CAREFULLY IN ORDER TO ENSURE PROPER INSTALLATION AND OPERATION OF THE AKRAPOVIC EXHAUST SYSTEM.

! THE EXHAUST SYSTEM CAN BE EXTREMELY HOT. LET THE MOTORCYCLE COOL DOWN BEFORE BEGINNING INSTALLATION.

 WE ADVISE YOU TO LEAVE INSTALLATION TO A QUALIFIED SERVICEMAN. IMPROPER INSTALLATION MAY RESULT IN A SHORTER LIFE PERIOD OF THE EXHAUST SYSTEM AND/OR DAMAGE TO THE MOTORCYCLE.

□ Removal of stock exhaust system

1. Put the motorcycle on a stand and wait until it is cold (if hot).
2. Remove the cowlings.
3. Dismount the stock exhaust system (from back (muffler) to front (header tubes)). The bolt which connects the water cooler must be removed. Make sure not to damage the cooling fins. The cooler does not have to be disconnected, since it is possible to move them out of the way. Move the cooler into a position which allows the stock header tubes to be removed.
4. Continue with the installation of the Akrapovic exhaust system.

□ Installation of the Akrapovic exhaust system

1. Correct position of the installed Akrapovic RACING or EVOLUTION system (**Figure 1**)
2. Insert the inner sleeve into the exhaust port so that the end with smaller inner diameter is facing towards the engine. Put the flange on the inner sleeve so that the groove on the flange matches the sleeve. Turn the flange into position so that the spring position matches the hook on the header pipe (**Figure 2 & 3**).
NOTE FOR AKRAPOVIC EVOLUTION (TITANIUM) EXHAUST SYSTEMS: DO NOT apply ceramic anti-seizing grease (Figure 4) between inner sleeve and header tube. Tighten the bolts. Repeat the procedure for all exhaust ports.

FOR AKRAPOVIC EVOLUTION (TITANIUM) EXHAUST SYSTEMS ONLY:

Ceramic anti-seizing grease must be used between the titanium tubes to reduce wear. When assembling titanium pipes, apply a thin layer of the ceramic anti-seizing grease (Figure 4) to the entire length and circumference of the inside of the female side of the pipe connection (the part that overlaps the other side).

! WHEN USING ANTI-SEIZING GREASE, AVOID EXCESSIVE SKIN CONTACT. AVOID CONTACT WITH EYES AND MUCOUS MEMBRANES. DO NOT INHALE FUMES. STORE OUT OF THE REACH OF CHILDREN.

 ANTI-SEIZING GREASE PREVENTS SEIZING, CORROSION AND EXCESSIVE WEAR BETWEEN THE TITANIUM COMPONENTS OF YOUR EXHAUST SYSTEM.

3. Continue with the installation of the rest of the exhaust system. Install the header tubes (**make sure not to damage the cooling fins**), collectors and link pipe (**Figure 5 & 6**).
4. Slip the muffler onto the link pipe (outlet side). Connect it with the springs. (**Figure 7**)
5. Check the clearance between the exhaust system and other parts of the motorcycle (brake and suspension systems). Orient the muffler so that it is facing upwards.
6. Orient the clamp with the offset on the right side (looking from the back). Slip the muffler clamp onto the muffler. Slightly tighten the bolt (**Figure 8**).

Exhaust system with the optional carbon-fiber chassis hanging bracket:

- Install the optional carbon-fiber chassis hanging bracket. Use stock nut, bolt and washer.
 - Orient the clamp with the offset on the left side – opposite as onto the stock bracket (looking from the back). Slip the muffler clamp on to the muffler. The carbon-fiber chassis hanging bracket slightly raises the level of the muffler.
7. Recheck the position of the entire exhaust system (**see Picture 1, 2, 3, 5, 6, 8**) and **tighten all bolts. Also replace and tighten the water cooler.** Install the cowlings.
 8. clean grease spots:
 - a. muffler – titanium outer sleeve: use a soft cloth sprayed with a multi-purpose spray lubricant (WD-40 or equivalent)

- b. muffler – carbon-fiber outer sleeve: use a soft dry cloth
- c. stainless steel link pipe: use a soft cloth sprayed with a contact cleaner, then wipe with a soft dry cloth
- d. titanium link pipe: use a soft cloth sprayed with a multi-purpose spray lubricant (WD-40 or equivalent)
- e. evolution model: tubes - use a soft cloth sprayed with a multi-purpose spray lubricant (WD-40 or equivalent)
- f. racing model: tubes - use a soft cloth sprayed with a contact cleaner, then wipe with a soft dry cloth
- g. racing model with titanium link pipe: header tubes & collector - use a soft cloth sprayed with a contact cleaner, then wipe with a soft dry cloth. Titanium link pipe - use a soft cloth sprayed with a multi-purpose spray lubricant (WD-40 or equivalent)

Cleaning will prevent spots from burning onto the surface. Do not use aggressive chemical cleaners, because they can damage the sticker.

- 9. Replace all of the dismantled stock parts and cowlings in the reverse order from the order in which they were removed.
- 10. **Check the operation of the brakes and suspension. Make sure all the bolts are sufficiently tightened. In case the exhaust system touches the cowling or other parts repeat the adjustment of the exhaust system or contact your authorized dealer.**

! IT IS NORMAL IF WHITE SMOKE COMES OUT OF THE MUFFLER AT FIRST OPERATION.

MAINTENANCE OF THE AKRAPOVIC EXHAUST SYSTEM

- 1. Clean the titanium muffler outer sleeve with a multi-purpose spray lubricant (WD-40 or equivalent) and carbon fiber outer sleeve with soft and dry cloth. Do not use aggressive chemical cleaners, because they can damage the sticker. A change in the color of the exhaust system is normal due to the high temperatures.
- 2. The wearing out of the muffler silencing material depends on the type of the motor and riding style. Contact your dealer/serviceman if visible changes appear on muffler's outer sleeve or the noise level is increased.
- 3. Periodically ensure that all the bolts and springs are sufficiently tight.

Photos:



Figure 1



Figure 2

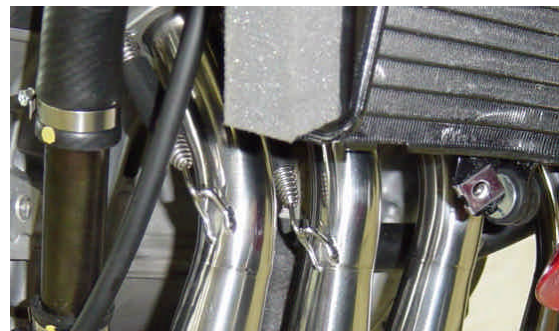


Figure 3



Figure 4

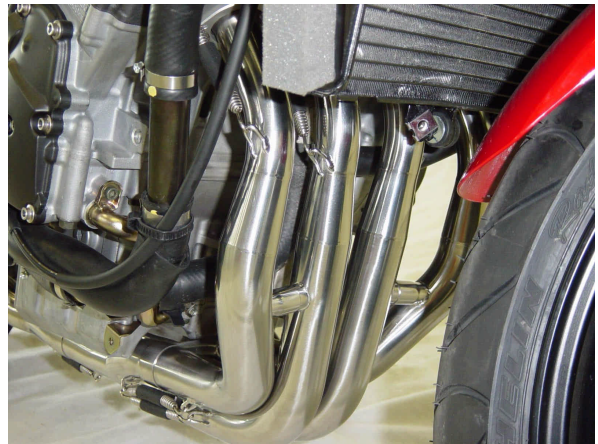


Figure 5



Figure 6



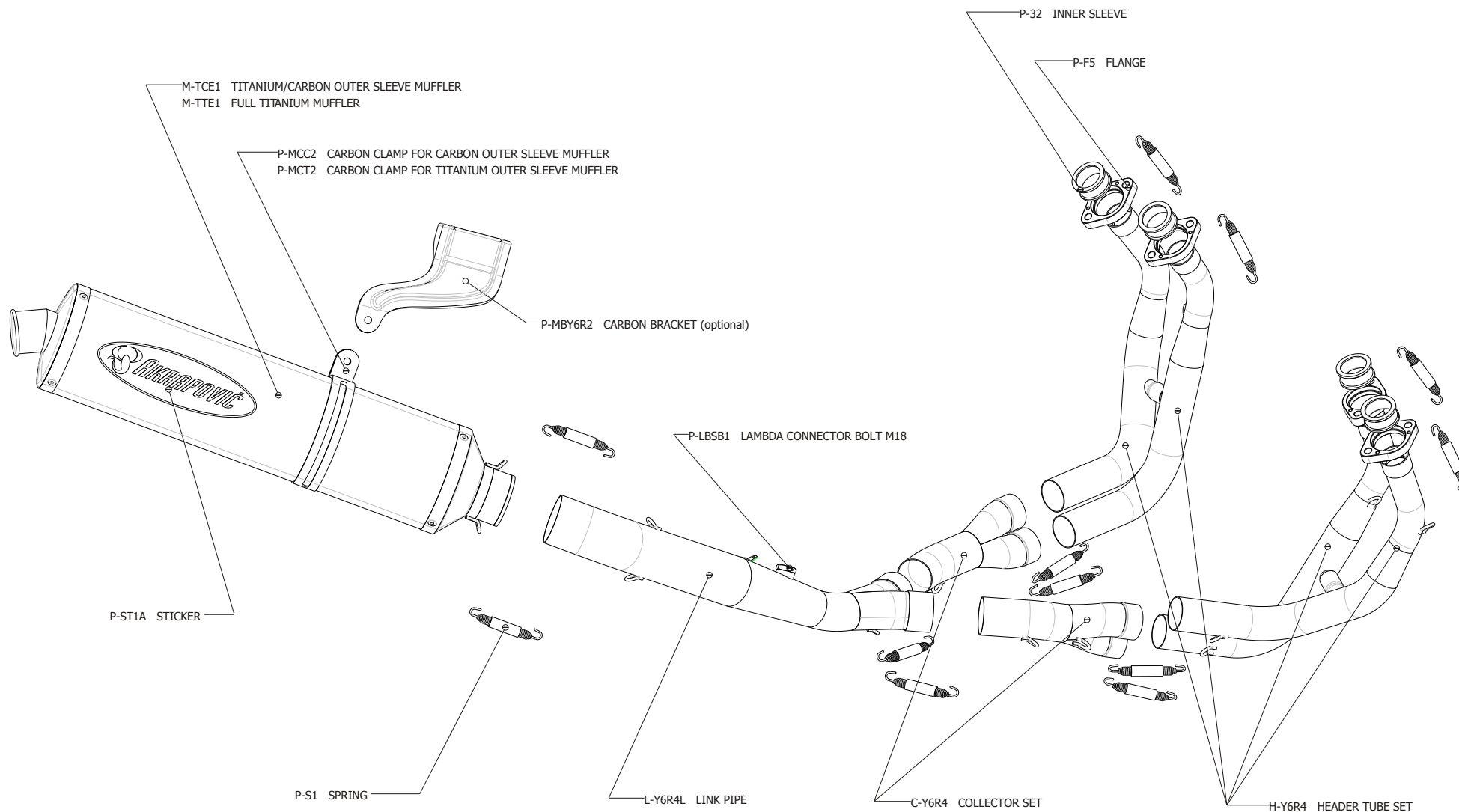
Figure 7



Figure 8

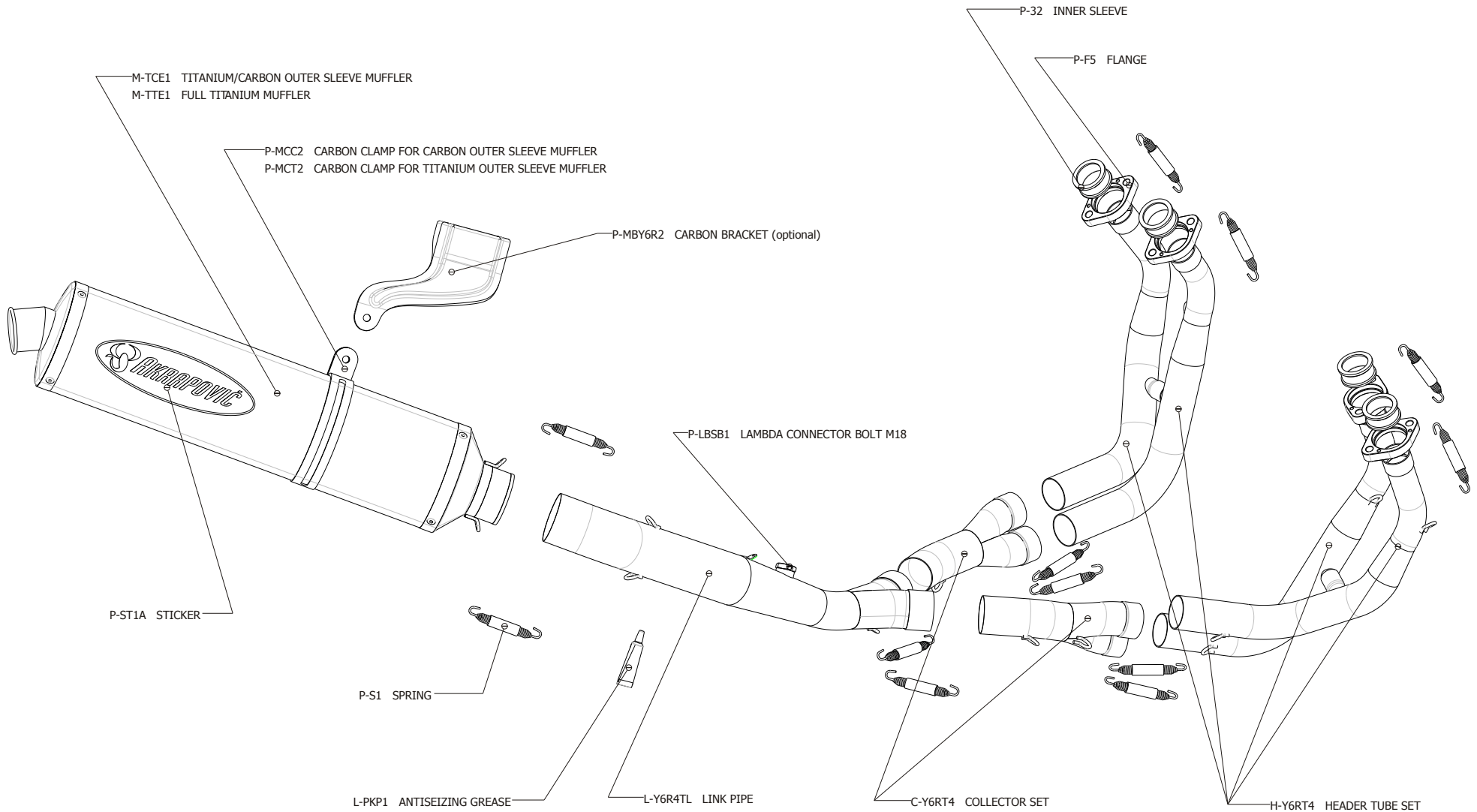
YAMAHA YZF R6 Complete exhaust system/Racing line, model year: 2003

Product code: S-Y6R4L-C
S-Y6R4L-T



YAMAHA YZF R6 Complete exhaust system/Evolution line, model year: 2003

Product code: S-Y6RFT4TL-C
S-Y6RFT4TL-T



WARNING:

Please note that certain aftermarket exhaust systems may not comply with applicable California laws and regulations, and may therefore be prohibited for use on California highways or roads, or on roads or vehicles otherwise subject to emissions control requirements.

Akrapovič exhaust systems for automobiles and motorcycles mounted downstream of the catalytic converter (also known as “cat-back systems”) are considered “replacement parts” in California by the California Air Resources Board (CARB), and do not require an exemption or executive order from CARB to be sold in California. However, California prohibits the use of any aftermarket exhaust system that modifies, removes or replaces original equipment catalysts, unless CARB has issued an Executive Order as to such part or system.

Further, Akrapovič parts or exhaust systems used or intended for use on “racing vehicles” (i.e. a competition vehicle used exclusively for competition on closed-course circuits) do not require an exemption or Executive Order from CARB to be sold in California. However, such parts are prohibited from use on California public highways or roads, even if occasionally used “off-road.”